

MARINE (STCW CONVENTION) REGULATIONS 2001

IN exercise of the powers conferred on me by sections 143A and 212 of the Marine Act, I make these Regulations—

Part I — PRELIMINARY

Citation

1. These Regulations may be cited as the Marine (STCW Convention) Regulations 2001.

Interpretation

2.—(1) In these Regulations, unless the context otherwise requires -
“Act” means the Marine Act 1986 (No. 35 of 1986);

“Administration” means Fiji Islands Maritime Safety Administration (FIMSA);

“appropriate certificate” means a certificate held by a seafarer appropriate for the size, type, trading area and kilowatts of the main propulsion power of the vessel in accordance with the standards set out in Schedule I and the Classes set out in Schedule V to these Regulations;

“approved” means approved by Fiji Marine Board;

“Assessor” means a person appointed by the Marine Board to conduct assessments under these Regulations;

“certificate” means —

- (a) a certificate of competency issued to a seafarer under section 99 of the Act and in accordance with Part VI of these Regulations;
- (b) a certificate of competency revalidated under regulation 22(3); or
- (c) a certificate of competency issued to a seafarer by the maritime administration of another Party and recognised by the Minister under regulation 20;

“certificate of proficiency” means a short course certificate issued to a seafarer who has demonstrated proficiency according to the standards set forth in—

- (a) chapter V, on standards regarding special training requirements for personnel on certain types of ships; and
- (b) chapter VI, on standards regarding emergency, occupational safety, medical care and survival functions,

of the Code but which is lower than a certificate of competency.

"clear grounds" in respect of the control procedures set forth in regulation 5 (2) includes—

- (a) collision, grounding or stranding;
- (b) an illegal discharge;
- (c) an operation that would pose a danger to lives, property or the marine environment; or
- (d) any deficiencies in a vessel's equipment or documentation;

"Code" means the Seafarers' Training, Certification and Watchkeeping Code attached as Resolution 2 to the Final Act of the 1995 STCW Conference;

"Convention" means the International Convention on Standards of Training, Certification and Watchkeeping for Seafarers, 1978, as amended in 1995 and any other amendments that are accepted by or binding on the Republic of Fiji;

"deficiencies", in respect of clear grounds, includes —

- (a) failure to hold an appropriate certificate;
- (b) failure to comply with the provisions of the Safe Manning Certificate;
- (c) watch arrangements that do not conform with those specified by the flag state administration;
- (d) absence in a watch of a qualified seafarer; or
- (e) inability to provide seafarers who are sufficiently rested or otherwise fit for watchkeeping duties;

"designated physician" means a medical practitioner registered under the Medical and Dental Practitioners Act (Cap. 255) or a medical practitioner designated by the Marine Board for the purpose of conducting medical examinations of seafarers;

"Director" means the Director of Maritime Safety;

"dispensation" means a dispensation from a requirement of these Regulations or the Convention or the STCW Regulations or the Code, granted either generally or in a particular case by the Marine Board under regulation 23;

"duly certificated" in relation to a seafarer, means holding a valid certificate showing that the holder is qualified to serve in the capacity concerned on the type, tonnage, power and means of propulsion, and class of vessel and voyage concerned and to perform the functions involved at the relevant level of responsibility specified in the certificate;

"endorsement" means an endorsement to a certificate made by the Marine Board under regulation 21 or made by the maritime administration of another Party;

- "Examiner" mean a person appointed by the Marine Board to conduct examinations under these Regulations;
- "EEZ" has the meaning given by the Marine Spaces Act;
- "Fiji seafarer" means a seafarer who is a permanent resident of Fiji;
- "Fiji vessel" means a vessel that is registered or licensed in Fiji;
- "Fiji waters" means internal waters, archipelagic waters, the territorial sea, the contiguous zone and the exclusive economic zone;
- "Government" means the Government of the Republic of Fiji;
- "IMO" means the International Maritime Organisation;
- "investigation" means an impartial investigation under STCW Regulation I/5 paragraph 1; ➤
- "Marine Board" means Fiji Marine Board as defined in the Act;
- "maritime training institution" means a training institution approved by the Government for training of seafarers to the level stipulated under the Convention and for the issuance of STCW certificates by the Government;
- "owner" means an owner or operator of a vessel or a bareboat charterer of a vessel and includes a "company" as defined in Regulation I/1 of the Convention;
- "Party" means a Party to the Convention;
- "Physicians Guide to STCW-95" means the publication of that name published by the Secretariat of the Pacific Community (SPC);
- "Port State" means the State that is a Party in which a vessel of another Party is situated;
- "Port State Control" means the control procedures under Article X and Regulation I/4 of the Convention;
- "Port State Control Officer" means a surveyor duly appointed under section 57 of the Act;
- "recognised" means recognised by the Marine Board under regulation 20;
- "Registrar" means the Registrar of Seamen;
- "Safe Manning Certificate" means a certificate issued by the Marine Board attesting that the requisite number of seafarers, each holding the appropriate qualification for service in the particular capacity, are on board the vessel for its intended voyage;
- "Safety Officers" means the Officers of the Fiji Islands Maritime Safety Administration;

"School of Maritime Studies" means the School of Maritime Studies of the Fiji Institute of Technology;

"Sea Area A1" means an area within the radiotelephone coverage of at least one VHF coast station in which continuous digital selective calling (DSC) alerting is available, as may be defined by a Contracting Government;

"Sea Area A2" means an area, excluding sea area A1, within the radiotelephone coverage of at least one MF coast station in which continuous DSC alerting is available, as may be defined by a Contracting Government;

"Sea Area A3" means an area, excluding sea areas A1 and A2, within the coverage of INMARSAT geostationary satellite in which continuous alerting is available; and

"Sea Area A4" means an area outside sea areas A1, A2 and A3;

"seafarer" means a person employed in any capacity on a vessel and includes a person who is employed, or who seeks employment, as master, officer, or rating on a vessel;

"seagoing service" means service on board a vessel relevant to the issue of a certificate or other qualifications;

"SOLAS" means the International Convention for the Safety of Life at Sea, 1974, as amended by the Protocols of 1978 and 1988 and any amendments from time to time adopted by IMO and accepted by the Government;

"STCW Regulations" means the Regulations contained in the Annex to the Convention;

"Surveyor" means a person appointed as such under section 57 of the Act;

"Telecommunication Convention" means the International Telecommunication Union (ITU) Convention and associated Recommendations;

"Territorial Waters" has the meaning given by the Marine Spaces Act;

(2) In compliance with STCW Regulation I/3, the following terms apply to these Regulations —

"sheltered waters voyage" means a limited voyage, trade or operation of a vessel within inland waters and protected waters adjacent to beaches or landings within Fiji;

"inshore voyage" means a voyage, trade or operation of a vessel within 15 nautical miles off the coast within Fiji;

"territorial waters voyage" means a voyage, trade or operation of a vessel within 12 nautical miles from the baselines and includes voyages within the territorial waters within Fiji;

“near-coastal voyage” means a voyage, trade or operation of a vessel within 200 nautical miles from the baselines and includes voyages within the Exclusive Economic Zone of Fiji;

“unlimited voyage” means a voyage, trade or operation of a vessel, which extends beyond 200 nautical miles from the baselines or beyond the Exclusive Economic Zone of Fiji.

(3) In respect of Part VII, (Special Training Requirements), the following terms apply—

“Oil tanker” means a vessel constructed and used for the carriage of petroleum and petroleum products in bulk;

“chemical tanker” means a vessel constructed or adapted and used for the carriage in bulk of any liquid in bulk listed in chapter 17 of the International Bulk Chemical Code;

“liquefied gas tanker” means a vessel constructed or adapted and used for the carriage in bulk of any liquefied gas or other product listed in chapter 19 of the International Gas Carrier Code;

“RO-RO passenger ship” means a passenger ship with ro-ro cargo spaces or special category spaces as defined by the International Convention for the Safety of Life at Sea, 1974, as amended.

(4) In respect of Part XI, (Marine Radio), the following terms apply—

“GMDSS” means the global maritime distress and safety system as prescribed in SOLAS;

“Organisation” means the International Maritime Organisation;

“Radio Regulations” means the Radio Regulations annexed to, or regarded as being annexed to, the most recent International Telecommunications Union Convention in force at any time.

(5) Where a term is used in these Regulations that is defined in Article II of the Convention or in Regulation I/1 of the STCW Regulations, the term has the same meaning as in the Convention or STCW Regulations, unless a different meaning is given to that term by these Regulations or by necessary implication.

STCW Convention

3.—(1) The carriage of the Convention, STCW Regulations and the Code (IMO Publication IMO-938E) is mandatory on all vessels registered in Fiji to which the Convention applies.

(2) The carriage of these Regulations is mandatory on all vessels registered in Fiji.

(3) The training, assessment and certification procedures required by these Regulations and not covered by the Convention, STCW Regulations and the Code are as prescribed in other Regulations under the Act.

Application

4—(1) These Regulations apply to—

- (a) Fiji vessels;
- (b) seafarers employed on Fiji vessels;
- (c) owners and masters of Fiji vessels;
- (d) Fiji seafarers;
- (e) seafarers or holders of certificates recognised and endorsed by the Government;
- (f) maritime training institutions located in Fiji; and
- (g) certificates issued under these Regulations or recognised by the Government as so issued.

(2) Notwithstanding Article III of the Convention, these Regulations apply to fishing vessels.

(3) For the purposes of control under Part II, the provisions of the Convention, the STCW Regulations and the Code apply to—

- (a) all foreign vessels in Fiji waters;
- (b) all owners and masters of such vessels; and
- (c) all seafarers employed on such vessels.

Part II – CONTROL PROCEDURES

Power to exercise Control procedures

5.—(1) A Surveyor duly appointed under the Act may exercise control procedures described in Article X and Regulation I/4 of the Convention.

(2) In the absence of clear grounds for believing that the standards of the Convention and Code are not being maintained, control is limited to verifying that all certificates are in order and that the numbers and certificates of seafarers are in conformity with the Safe Manning Certificate.

(3) In the event there are clear grounds for believing that the standards of the Convention and Code are not being maintained, the competence of seafarers may be assessed in accordance with the control procedures specified in Section A-I/4 of the Code.

Register of Seamen and certificates

6.—(1) The Registrar must maintain a Register of Seamen and record in it the particulars of documents issued under these Regulations, including—

- (a) all certificates issued;
- (b) all endorsements made to certificates;
- (c) all certificates suspended or cancelled;
- (d) all certificates issued by another country and recognised as valid on Fiji vessels;
- (e) all dispensations and exemptions granted under these Regulations ;
- (f) all certificates issued or recognised that have been revalidated under these Regulations ;
- (g) all certificates issued to replace those lost or expired; and
- (h) all medical certificates issued to seafarers under Part VIII .

(2) The Registrar must make information from the Register available to the Secretary-General of IMO, any Party, any owner or any Registrar seeking authenticity and validity of certificates and endorsements issued in Fiji.

Offences and penalties

7.—(1) In respect of these Regulations, the Convention, the STCW Regulations or the Code, a person who—

- (a) contravenes; or
- (b) fails to do anything required,

commits an offence and, if no other penalty is prescribed, is liable upon conviction to a penalty as set forth in subregulation (2).

(2) Penalties are as follows—

- (a) in the case of an owner, agent or operator—
 - (i) in the case of an individual a fine of up to \$10,000 or imprisonment of up to 2 year, or both;
 - (ii) in the case of a body corporate a fine of up to \$40,000;
- (b) in the case of a master a fine of up to \$10,000 or imprisonment of up to 2 year, or both;
- (c) in the case of an officer or seafarer a fine of up to \$3,000 or imprisonment for up to 3 months, or both.

Part III — RESPONSIBILITIES OF OWNERS AND OTHERS

Responsibilities of owners

8.—(1) An owner of a vessel must employ seafarers for service on the vessel in accordance with the Convention.

(2) An owner of a vessel must provide written instructions to the master setting out the policies and procedures to be followed to ensure that all seafarers on board the vessel are given a reasonable opportunity to become familiar with—

- (a) the shipboard equipment and operating procedures; and
- (b) any other arrangements needed for the proper performance of their duties before being assigned to those duties.

(3) The policies and procedures referred to in subregulation (2) must—

(a) allocate a reasonable period of time during which each seafarer will have an opportunity to become familiar with—

- (i) the specific equipment the seafarer will be operating; and
- (ii) vessel—specific watchkeeping, safety, environmental protection and emergency procedures and arrangements the seafarer needs to know to perform the assigned duties properly;

(b) designate a knowledgeable seafarer who is responsible for ensuring that an opportunity is provided for each seafarer to receive essential information in a language the seafarer understands; and

(c) ensure that —

- (i) seafarers are free from fatigue;
- (ii) rest periods are observed;
- (iii) watch rosters are posted in accordance with the watchkeeping arrangements specified under Part IV; and
- (iv) the rosters are readily available for inspection by Port State Control Officers and seafarers.

(4) The owner of a vessel must provide vessel-specific introductory programmes aimed at assisting newly employed seafarers to familiarise themselves with all procedures and equipment relating to their area of responsibility.

(5) The owner of a vessel to which these Regulations apply must enter into an employment contract with each seafarer for every voyage, which agreement must be contained in Articles of Agreement or employment contract to be signed by both the Master and the seafarer.

- (6) The Articles of Agreement or employment contract under subregulation (5) must—
- (a) contain the bio-data of the seafarer required by the Convention;
 - (b) specify the date on which the seafarer was engaged and in what capacity, the seafarer's certificate, the nature of the voyage, and the date of the seafarer's discharge.

Responsibilities of owners and masters

9.—(1) An owner and master of a vessel must each ensure as far as is practicable that—

- (a) all seafarers employed on the vessel are duly certificated;
- (b) the vessel is manned in compliance with the applicable safe manning requirements prescribed in Part V;
- (c) documentation and data relevant to all seafarers employed on the vessel are maintained and readily accessible and include, without being limited to, documentation and data on their experience, training, medical fitness and competency in assigned duties;
- (d) all seafarers employed on the vessel are familiar with their specific duties and with all vessel arrangements, installations, equipment, procedures and vessel characteristics relevant to their routine or emergency duties; and
- (e) the vessel's complement can effectively co-ordinate their activities in an emergency situation and in performing functions vital to safety or to the prevention or mitigation of pollution.

(2) The owner and the master of a vessel to whom these Regulations apply must each ensure that every seafarer can make a knowledgeable and informed contribution to the safe operation of the vessel.

(3) The date of engagement and discharge of every seafarer on a vessel, and particulars of the vessel (gross tonnage and the main propulsion power in kilowatts) must be recorded by the owner or master in the Seafarer's Employment Record Book.

Responsibilities of master

10.—(1) A master must take all steps necessary to implement any company instructions issued in accordance with regulation 8, which steps should include—

- (a) identifying all seafarers who are newly employed on board the vessel before they are assigned to any duties;
- (b) providing the opportunity for all newly arrived seafarers to—
 - (i) visit the spaces, in which their primary duties are to be performed;
 - (ii) get acquainted with the location, controls and display features of equipment they will be operating or using; and

- (iii) activate the equipment when possible and perform functions using the controls on the equipment; and
 - (iv) observe and ask questions of someone who is already familiar with the equipment, procedures and other arrangements, and who can communicate information in a language which the seafarer understands; and
- (c) providing for a suitable period of supervision when there is any doubt that a newly employed seafarer is familiar with the shipboard equipment, operating procedures and other arrangements needed for the proper performance of his or her duties.

(2) The master of a vessel to which these Regulations apply must keep on board the vessel for the duration of the voyage Articles of Agreement evidencing the contract of employment between the owner and every seafarer on board the vessel.

(3) The master must sign the Articles of Agreement on behalf of the owner and ensure that the seafarer fully understands their meaning before appending his or her signature or mark.

Responsibilities of seafarers

11.—(1) A seafarer assigned to a vessel to which these Regulations apply must take full advantage of every opportunity provided to become familiar with the shipboard equipment, operating procedures, and other arrangements needed for the proper performance of his or her duties.

(2) Immediately upon arriving on board for the first time, a seafarer has the responsibility to become acquainted with the vessel's working environment, particularly with respect to new or unfamiliar equipment, procedures, or arrangements.

(3) A seafarer who does not promptly attain the level of familiarity required for performing his or her duties must bring this fact to the attention of his supervisor.

Offences and penalties

12.—(1) An owner who fails to comply with regulation 8 or 9 commits an offence.

Penalty: (i) in the case of an individual a fine of up to \$10,000 or imprisonment of up to 2 year, or both;

(ii) in the case of a body corporate a fine of up to \$40,000;

(2) A master who fails to comply with regulation 9 or 10 commits an offence.

Penalty: A fine of up to \$10,000 or imprisonment for up to 1 year or both.

(3) A seafarer who fails to comply with regulation 11 commits an offence.

Penalty: A fine of up to \$3,000 or imprisonment for up to 3 months, or both.

Part IV - WATCHKEEPING OF VESSELS

Watchkeeping arrangements

13.—(1) The owner, master, chief engineer officer and all watchkeeping personnel of every vessel to which these Regulations apply must observe the requirements, principles and guidelines set out in the Convention and the Code and published in the "*Standards Regarding Watchkeeping under STCW-95*" by the Secretariat of the Pacific Community to ensure that a safe watch is maintained at all times.

(2) The master of a vessel to which these Regulations apply must ensure that watchkeeping arrangements are adequate to maintain a safe watch while the vessel is at sea, taking into account the following principles—

- (a) the officer in charge of a navigational watch is responsible for the safe navigation of the vessel and must be physically present on the bridge or associated location during his or her period of duty;
- (b) the radio operator is responsible for maintaining continuous radio watch on appropriate frequencies during his or her period of duty;
- (c) the officer in charge of an engineering watch must be immediately available and physically present in the machinery spaces when required.

(3) Appropriate and effective watches must be maintained for the purpose of safety at all times—

- (a) when the vessel is at anchor, moored or alongside a berth; and
- (b) when the vessel is carrying hazardous cargo.

(4) The watchkeeping arrangements and principles to be observed are those contained in Section A-VIII/2 of the Code, and due regard must be had to the guidance contained in Section B-VIII/2 of the Code.

(5) The owner, master, chief engineer and every seafarer with watchkeeping responsibilities on a vessel to which these Regulations apply, must observe the requirements, principles and guidelines in respect of Watchkeeping set out in the Convention and the Code and published in the "*Standards Regarding Watchkeeping under STCW-95*".

(6) An owner, master, chief engineer or seafarer with watchkeeping duties who fails to comply with this regulation commits an offence and upon conviction is liable—

(a) in the case of an owner.

Penalty: (i) in the case of an individual a fine of up to \$10,000 or imprisonment of up to 2 year, or both;

(ii) in the case of a body corporate a fine of up to \$40,000;

(b) in the case of a master or chief engineer.

Penalty: A fine of up to \$10,000 or imprisonment for up to 1 year, or both;

(c) in the case of a seafarer other than the master or chief engineer.

Penalty: A fine of up to \$3,000 or imprisonment for up to 3 months, or both.

Fitness for duty

14.—(1) The system of watches aboard a vessel must be so arranged and duties so organised that—

(a) the efficiency of all personnel with watchkeeping duties is not impaired by fatigue; and

(b) the first watch at the commencement of a voyage and subsequent relieving watches are sufficiently rested and otherwise fit for duty.

(2) Without limiting subregulation (1)—

(a) all seafarers who are assigned duty as officer in charge of a watch or as a rating forming part of a watch must be allowed a minimum of 10 hours rest in any 24-hour period;

(b) the hours of rest may be divided into no more than 2 periods, one of which must be at least 6 hours in length;

(c) the requirements for the rest periods prescribed in paragraphs (a) and (b) need not be maintained in the case of an emergency or drill, or in other over-riding operational conditions; and

(d) notwithstanding paragraphs (a) and (b), the minimum period of 10 hours may be reduced to not less than 6 consecutive hours, but any such reduction must not extend beyond 2 days and not less than 70 hours of rest need be provided in each 7 day period; and

(e) watch schedules must be posted on board where they are easily accessible.

Part V – MANNING OF VESSELS

Manning

15.—(1) The number of seafarers and classes of certificate to be held by seafarers required for the safe manning of each class of vessels are in Schedule II.

(2) In addition to the certificates required under subregulation (1), every passenger vessel must carry the number of persons holding certificates of proficiency- in Survival Craft and rescue boats other than fast Rescue Boat as required by Section A – VI/2 of the Code—

(a) in the case of survival craft and rescue boats - as set out in Part VII; and

(b) as set out in Schedule III.

(3) The minimum number of Fiji citizens employed on each Fiji vessel must be prescribed by the Minister.

(4) The number of seafarers and classes of certificates for the safe manning of vessels laid up and securely moored must be determined by the Marine Board .

(5) If a vessel has been manned in accordance with these Regulations, the Marine Board must issue a Safe Manning Certificate in the form set out in Schedule IV.

(6) The Minister may, upon application, grant an exemption from the requirements prescribed in Schedule II, if he or she considers that to do so is in the public interest and will not compromise the safety of the vessel, its crew, passengers or cargo.

(7) The Administration may impose additional operating limits on vessels operating on Inshore and Sheltered waters.

(8) For the purpose of these Regulations, an enclosed vessel of 20 gross tons will be deemed equivalent to an open vessel of 15 metres length overall.

Offences and penalties

16.—(1) The owner of a Fiji vessel who engages or causes or permits to be engaged as a seafarer a person who does not hold a certificate commits an offence.

- Penalty: (i) in the case of an individual a fine of up to \$10,000 or imprisonment of up to 2 year, or both;
(ii) in the case of a body corporate a fine of up to \$40,000;

(2) The owner of a Fiji vessel who causes or permits the vessel to go to sea when it is not safely manned in accordance with this Part commits an offence.

- Penalty: (i) in the case of an individual a fine of up to \$10,000 or imprisonment of up to 2 year, or both;
(ii) in the case of a body corporate a fine of up to \$40,000;

(3) The owner of a vessel who causes or permits the vessel to go to sea when it is not manned with the prescribed number of Fiji seafarers commits an offence.

- Penalty: (i) in the case of an individual a fine of up to \$10,000 or imprisonment of up to 2 year, or both;
(ii) in the case of a body corporate a fine of up to \$40,000;

(4) The master of a Fiji vessel who engages as a seafarer a person who does not hold a certificate commits an offence.

Penalty: A fine of up to \$10,000 or imprisonment for up to 1 year, or both.

(5) The master of a vessel who takes the vessel to sea when it is not safely manned in accordance with this Part commits an offence.

Penalty: A fine of up to \$10,000 or imprisonment for up to 1 year, or both.

(6) The master of a Fiji vessel who takes the vessel to sea when it is not manned with the prescribed number of Fiji seafarers commits an offence.

Penalty: A fine of up to \$10,000 or imprisonment for up to 1 year, or both.

(7) If these Regulations require a function or service on a vessel to be performed by a seafarer who is a holder of an appropriate certificate, a master who requires or permits that function or service to be performed by a seafarer who is not a holder of the required certificate, a valid dispensation or a recognition endorsement commits an offence.

Penalty: A fine of up to \$10,000 or imprisonment for up to 1 year, or both.

Part VI—TRAINING AND CERTIFICATION OF SEAFARERS

Training, assessment and power to make rules

17.— (1) The training and assessment of competence of seafarers in Fiji must be administered, supervised and monitored in accordance with the provisions of Section A-I/6 of the Code.

(2) Every person responsible for the training and assessment of competence of seafarers must be appropriately qualified in accordance with the provisions of Section A-I/6 of the Code for the type and level of training or assessment involved.

(3) Training programmes provided for seafarers in Fiji must be those as specified in Schedule V and must be conducted in accordance with the provisions of the Convention and the STCW Regulations and to the standards required by the Code.

(4) The assessment of competence of seafarers in Fiji must be in accordance with the provisions of the Convention and STCW Regulations and to the standards specified in relevant Sections of the Code.

(5) Curricula developed for training programmes offered in Fiji must be based on the relevant IMO Model courses or courses of similar content and must incorporate the relevant requirements of the Code.

(6) All modules prescribed must be valid for a period of 5 years from the date of achievement.

(7) The training and assessment of seafarers must be carried out in the English language.

(8) The Marine Board may make Rules setting out standards and procedures for—

(a) course outlines, detailed curricula and methods of assessment;

(b) procedures for application for certificates, calculation of sea service and determination of prerequisites;

- (c) conduct of examinations and determination of pass marks;
- (d) procedures for re-sitting examinations;
- (e) form of safety training certificates;
- (f) form of certificates of competency, endorsements thereon and recognition of such certificates issued by another administration; and
- (g) the format of sea service record in the Seafarers' Employment and Training Record Book; and
- (h) any other associated requirements that it deems necessary at the time.

Training institutions

18.—(1) If the Minister is satisfied that an institution complies with the relevant provision of the Convention, the STCW Regulations and the Code, the Minister may by order in the *Gazette* approve another institution for the training and assessment of seafarers.

(2) For the purpose of subregulation (1), the School of Maritime Studies is designated as an approved institution for maritime training and assessment in Fiji.

(8) The Marine Board may appoint appropriately qualified Examiners and Assessors for the specified types and levels of training and assessment of competence of seafarers.

(9) The Marine Board may issue an Assessment Results Form for a certificate of competency for each student who has satisfactorily completed each module in the course structure of the training programmes specified in Schedule V.

(10) The School of Maritime Studies or other approved training institutions may issue certificates attesting to the satisfactory completion of short courses listed in Schedule VI.

(11) The Head of the School of Maritime Studies, the head of any other approved training institution and Fiji National Training Council must maintain a record of the assessment of all seafarers to whom Assessment Results Forms are issued.

(12) The Minister may approve, subject to the requirements of the Code, training courses for the lower classes of certificates to be provided by Fiji National Training Council.

(13) Assessment of trainees who have satisfactorily completed a course provided by Fiji National Training Council must be carried out by Examiners and Assessors appointed under subregulation (3).

(14) The Marine Board may issue, recognise and endorse Certificates of Competency listed in Schedule VI to those seafarers who have satisfied the Examiners that they are competent in the functions and levels of responsibility mentioned in the certificate.

(15) A Certificate of Competency or Proficiency issued to a seafarer by the Marine Board is sufficient evidence of a seafarer's competence in the functions and levels of responsibility mentioned in the certificate.

Issue of certificates

19.—(1) The Marine Board is the authority for—

- (a) the approval and issue of certificates,
- (b) exemptions and dispensations;
- (c) recognition and endorsement of certificates;
- (d) suspension or cancellation of certificates.

(2) The Director may take such administrative action as is reasonably necessary for the proper administration of the training and certification of seafarers in accordance with the provisions of the Convention, the Code and these Regulations.

(3) The classes of certificates that may be issued, and the pre-requisites that candidates must satisfy for their issue, are set out in Schedule V.

(4) Candidates for certificates must provide satisfactory proof of—

- (a) their identity and age;
- (b) their medical fitness, in accordance with Part VIII;
- (c) completion of sea-going service, training or re-training;
- (d) any other requirements of the Administration.

(5) The certificates issued under subregulations (1) and (2) must be in a format similar to that set out in Section A-1/2 of the Code and must be in the English language.

(6) Where a seafarer applies for a certificate, the pre-requisites and standards of which are prescribed in the Convention or the Code, that seafarer must only be issued with a certificate if found to be duly qualified under the provisions of Article VI and Regulation I/2 of the Convention and the standards required by the Code.

(7) Where a seafarer applies for a certificate, the pre-requisites and standards of which are not prescribed in the Convention or the Code, that seafarer may be issued with a certificate if found to be duly qualified under the provisions of these Regulations.

(8) An Interim Certificate may be issued pending the issue of a Certificate of Competency.

(9) The Administration must maintain, in the office of the Registrar of Vessels, appointed under section 16 of the Act, a record of all certificates, exemptions and dispensations issued, suspended or cancelled and any form of endorsement to a certificate.

(10) If the holder of a certificate or endorsement needs to wear a visual aid to meet the required medical standards, the fact must be recorded on the certificate or endorsement.

Recognition of certificates

20.—(1) A certificate issued by a Party and endorsed by the issuing State as complying with the provisions of the Convention and Code, as set out in Schedule VI, may be recognised by the Marine Board in Fiji, provided that the certificate—

- (a) is issued by the maritime administration of the Party, which the administration in Fiji has satisfied itself, that the facilities and procedures, standards of competence, the issue and endorsement of certificates and record keeping are fully complied with and meets the provisions of the Convention;
- (b) complies with the provisions of the Code;
- (c) is appropriate to the duties to be performed by the holder on the vessel in which the holder intends to serve; and
- (d) is valid under the Convention for the vessel and for the voyage on which the vessel is engaged.

(2) The Director must ensure that the Party concerned is notified promptly of any significant change in the arrangements for the training and certification, in compliance with the Convention

(3) Every master, mate, engineer and radio officer and every person who forms part of the deck or engineering watch on a vessel not registered in Fiji but operating within Fiji waters must hold the appropriate certificate issued by a Party to the Convention for a vessel of that tonnage or propulsion power on the voyage in which it is engaged.

(4) A seafarer who presents a certificate for recognition must have, in accordance with Regulation I/10 of the Convention, an appropriate knowledge of the maritime legislation particular to the vessel and its area of operation and relevant to the functions the seafarer is permitted by the certificate to perform.

(5) The Marine Board may, if it recognises a certificate under subregulation (4), endorse such certificates to attest its recognition.

(6) The endorsement required under subregulation (5) must only be issued if all requirements of the Convention and these Regulations have been complied with.

(7) The form of the endorsement used under subregulation (5) are set out in paragraph 3 of section A- I/2 of the STCW Code.

- (8) The endorsements referred to in subregulations (4), (5), (6) and (7) must:
- (a) be issued as separate documents;

- (b) be assigned a unique number, except that endorsement attesting the recognition of a certificate may be assigned the same number as the certificate concerned, provided that the number is unique; and
- (c) expire as soon as the certificate being endorsed expires or is withdrawn, suspended or cancelled by the Party that issued it and, in any case, not more than 5 years after their date of issue.

(9) The capacity in which the holder of a certificate is authorized to serve must be identified in the form of endorsement in terms identical to those used in the applicable safe manning requirements of the Administration.

(10) Such an endorsement of recognition of a certificate issued by another Party may be known as a "Seagoing Licence".

(11) The Marine Board may, under the provisions of Regulation I/10 paragraph 5 of the Convention, if circumstances require, permit a seafarer to serve on a Fiji vessel for a period not exceeding 3 months while holding an appropriate and valid certificate issued and endorsed by another Party pending its endorsement for service on Fiji vessels.

(12) The Marine Board may, issue a certificate on the strength of documentary evidence of having achieved the required training and competence by another party.

Endorsements of certificates

21.—(1) Any endorsement of a certificate must be made by the Marine Board, in the English language, in a format similar to that illustrated in the Code, and may form part of the certificate.

(2) No such endorsement may be made unless the Marine Board is satisfied that all the requirements of the Convention have been complied with.

(3) Where an endorsement is requested attesting the recognition of a certificate, the Marine Board must only issue an endorsement if it is satisfied that the requirements of Regulation I/2 and I/10 of the Convention and Section A-I/10 of the Code have been complied with.

Revalidation of certificates

22.—(1) Every seafarer holding a certificate issued or recognised under these Regulations must, in order to qualify for seagoing service, hold a valid Medical Fitness Certificate and be required at intervals not exceeding 5 years to establish continued professional competence in accordance with Section A-I/11 of the Code.

(2) A seafarer holding a qualification issued in accordance with the requirements of Regulations VI/1, VI/2, VI/3 and VI/4 of the Convention must be required to demonstrate competence in accordance with the relevant requirements of Sections A-VI/1, VI/2, VI/3 and VI/4, of the Code, at intervals not exceeding 5 years.

(3) If a seafarer seeking revalidation of a certificate—

(a) produces evidence to the Minister that the seafarer has—

- (i) approved seagoing service, performing functions appropriate to the certificate held, for a period of at least one year in total during the preceeding 5 years; or
- (ii) performed functions considered to be equivalent to the seagoing service required under subparagraph (i); or
- (iii) one of the following:
 - (i) passed an approved test, or
 - (ii) successfully completed an approved course or courses, or
 - (iii) satisfactorily completed seagoing service, performing functions appropriate to the certificate held, for a period of not less than 3 months in a supernumerary capacity, or in a lower officer rank than that for which the certificate held is valid immediately prior to taking up the rank for which it is valid;

(b) has paid the fee prescribed in Schedule VII,

the Marine Board may revalidate the seafarer's certificate for a period not exceeding 5 years.

(4) A certificate which has expired and has not been revalidated in accordance with these Regulations, is not valid for seagoing service.

Dispensations

23. No dispensations may be issued by the Marine Board except in accordance with Article VIII of the Convention.

Transitional provisions

24. The transitional provisions in respect of training and certification of seafarers set out in Article VII and Regulation I/15 of the Convention must be followed in respect of the continued validation of certificates issued in Fiji.

Refresher courses

25. The holder of a certificate issued in accordance with the provisions of the Convention before 1st February 1997 must, for service after 1st February 2002, undergo appropriate refresher and updating training or assessment to meet the standard of competence for the appropriate certificates specified in Part A of the Code.

Offences and penalties

26.—(1) A seafarer who makes a false declaration in order to obtain a Certificate of Competency or an endorsement under this Part commits an offence.

Penalty: A fine of up to \$1,000 or imprisonment for up to one month, or both.

(2) A seafarer who obtains or uses a forged document or obtains a document by fraud for the purpose of obtaining a Certificate of Competency or an endorsement commits an offence.

Penalty: A fine of up to \$1,000 or imprisonment for up to one month, or both.

(3) A seafarer who issues a false document or forges a document to facilitate the issue of a Certificate of Competency or an endorsement commits an offence.

Penalty: A fine of up to \$1,000 or imprisonment for up to one month, or both.

(4) It is an offence for a person who holds a Certificate of Competency to fail, without reasonable excuse, to produce it if requested to do so by—

- (a) the Director;
- (b) a Registrar of Seamen;
- (c) a Port State Control Officer;
- (d) a Marine Checker; or
- (e) the owner or master of any vessel to which these Regulations apply.

Penalty: A fine of up to \$1,000

(5) It is an offence for any person to secure employment on a ship at sea while falsely pretending to be a qualified seafarer of any grade.

Penalty: A fine of up to \$1,000

(6) It is an offence for the owner or master of a vessel to which these Regulations apply to knowingly permit an unqualified seafarer to hold a relevant grade or designation.

Penalty: A fine of up to \$1,000

Fees

27. The fees payable for receiving applications, assessing competence and issuing certificates or endorsements under this Part are prescribed in Schedule VII.

Part VII—SPECIAL TRAINING REQUIREMENTS

Basic safety training

28.—(1) Every seafarer must receive familiarisation and basic safety training or instruction in accordance with STCW Regulation A-VI/1 and must meet the appropriate standard of competence specified therein.

(2) Before being assigned to any shipboard duties, every person employed on a

seagoing vessel must receive approved familiarisation training in personal survival techniques as set out in STCW Regulation A-VI/1 and Tables A-VI/1-1, A-VI/1-2, A-VI/1-3 and A-VI/1-4 of the Code.

(3) The owner and master of a vessel to which these Regulations apply must ensure that persons unfamiliar with the vessel are given a reasonable opportunity to become familiar with the shipboard equipment, operating procedures and other arrangements needed for the proper performance of their duties and that each seafarer can make a knowledgeable and informed contribution to the safe operation of the ship in accordance with Part III.

Training in Proficiency in survival craft and rescue boats other than fast rescue boats

29.—(1) Every person designated in the muster list of a vessel to—

- (a) command or be second in command of a survival craft;
- (b) be in charge of launching a survival craft; or
- (c) be a member of the operating crew of a marine escape system

must hold a certificate of Proficiency in survival craft and rescue boats other than fast rescue boats.

(2) To qualify for a Certificate of Proficiency in survival craft and rescue boats other than fast rescue boats a person must have—

- (a) approved seagoing service of not less than 12 months or have attended an approved training course and have approved seagoing service of not less than 6 months; and
- (b) achieved the standard of competence for certificates of Proficiency in survival craft and rescue boats other than fast rescue boats set out in Section A-VI/2, paragraphs 1 to 4 of the Code.

(3) A candidate for a Certificate of Proficiency in fast rescue boats must—

- (a) be the holder of a Certificate of Proficiency in survival craft and rescue boats other than fast rescue boats and rescue boats;
- (b) have attended an approved training course; and
- (c) meet the standard of competence for certificates of proficiency in fast rescue boats set out in paragraphs 5 to 8 of Section A-VI/2, of the Code.

Mandatory minimum requirements for advanced fire fighting

30.—(1) Every person designated to control fire-fighting operations must have successfully completed advanced training in fire fighting techniques in accordance with the provisions of Section A-VI/3 of the Code and must meet the standard of competence specified therein.

(2) A candidate for a Certificate of Proficiency must provide evidence of having achieved the required standard of competence within the previous 5 years, in accordance

with the methods of demonstrating competence and the criteria for evaluating competence tabulated in columns 3 and 4 of Table A-VI/3 of the Code.

(3) Where training in advanced fire fighting is not included in the qualifications for the Certificate of Competency to be issued, a special certificate or documented evidence, as appropriate, must be issued indicating that the holder has attended a course or training in advanced fire fighting.

(4) Every person so designated must, while serving on board a vessel, carry a certificate or other evidence of having received such training.

Mandatory minimum requirement for medical first aid

31.—(1) Every person designated to provide medical first aid on board a vessel must meet the standards of competence in medical first aid on board vessels specified in Section A-VI/4 of the Code.

(2) Every person designated to take charge of medical care on board a vessel must meet the standard of competence specified in Section A-VI/4, subsections 4 to 6 of the Code.

(3) If training in medical first aid or medical care is not included in the qualifications for the Certificate of Competency to be issued, a special certificate or documented evidence, as appropriate, must be issued indicating that the holder has attended a course of training in medical first aid or in medical care.

(4) A candidate for a certificate under paragraph 1 of Regulation VI/4, must provide evidence that the required standard of competence has been achieved in accordance with the methods for demonstrating competence and the criteria for evaluating competence tabulated in columns 3 and 4 of Table A-VI/4-1 of the Code.

(5) A candidate for a certificate under the provisions of Regulation VI/4, paragraph 2 must provide evidence that the required standard of competence has been achieved in accordance with the methods for demonstrating competence and the criteria for evaluating competence tabulated in columns 3 and 4 of Table A-VI/4-2 of the Code.

(6) Every person designated to provide medical first aid or take charge of medical care must, while serving on board the vessel, carry evidence of having received appropriate training.

Mandatory minimum training for seafarers on tankers

32.—(1) Every vessel which carries a bulk cargo consisting in whole or in part of oil, liquid chemicals or liquefied gases, must carry personnel qualified in accordance with this regulation.

(2) A person serving as master, chief mate, chief engineer, second engineer or any other officer with immediate responsibility for the loading, discharging, care in transit or handling of the cargo in such a vessel must hold either—

- (a) a certificate to confirm that the holder has received approved training in accordance with the requirements of paragraphs 9 to 14, 16 to 20, or 23 to 32 of Section A-V/1 of the Code as appropriate for the type of cargo that is carried; or
- (b) until 1 February 2002, an endorsement to a certificate or license issued under the provisions of STCW Convention 1978 confirming that the holder is competent to serve in oil, chemical or gas tankers as appropriate.

(3) A seafarer, other than one to whom subregulation (2) applies, who has specific duties and responsibilities relating to cargo equipment in tankers must hold a certificate or licence with an endorsement indicating that it is valid for service in tankers of the appropriate type or, if the seafarer does not hold such qualifications, must have—

- (a) completed a shore-based fire-fighting course;
- (b) (i) not less than 3 months sea service acceptable to the Marine Board; or
 - (ii) a shore-based tanker familiarisation course for tankers of the appropriate type within the 5 year period preceding the date of joining the vessel which is approved by a Party as meeting the requirements of either Chapter V, paragraphs 2 to 7 of Regulation A-V/1 of the Code or, in the case of a person who commenced sea-going service before 1st August 1998, training which meets the requirements of Chapter V, of Regulation V/1.1, V/2.1 or V/3.1 of the STCW Convention 1978; and
- (c) a certificate attesting to the training required by this regulation.

(4) A seafarer to whom subregulation (3) applies and who received appropriate training before 1st August 1998 in tanker familiarisation in accordance with the provisions of STCW Convention 1978 is regarded as continuing to meet the requirements of subregulation (3) if he or she holds documented evidence of not less than one year's service in tankers of the same type within the preceding 5 years.

Mandatory minimum training for seafarers on Ro-Ro passenger vessels

33—(1) Masters, officers, ratings and any other person serving on board ro-ro passenger vessels must, prior to being assigned shipboard duties, have completed the training specified in subregulations (3) to (7) in accordance with their capacity, duties and responsibilities.

(2) Every person required to be trained in accordance with subregulations (3), (6) and (7) must, at intervals not exceeding 5 years, undertake refresher training.

(3) Masters, officers and any other person designated on muster lists to assist passengers in emergency situations on board Ro-Ro passenger vessels must have completed training in crowd management as specified in Subsection 1 of Section A-V/2 of the Code.

(4) Masters, officers and any other person assigned specific duties and responsibilities on board Ro-Ro passenger vessels must have completed the familiarisation training specified in Subsection 2 of Section A-V/2 of the Code.

(5) Every persons providing direct service to passengers in passenger spaces on board Ro-Ro passenger vessels must have completed the safety training specified in Subsection 3 of Section A-V/2 of the Code.

(6) Masters, chief mates, chief engineer officers, second engineer officers and any other person assigned immediate responsibility for embarking and disembarking passengers, loading, discharging or securing cargo, or closing hull openings on board Ro-Ro passenger vessels must have completed approved training in passenger safety, cargo safety and hull integrity as specified in Subsection 4 of Section A-V/2 of the Code.

(7) Masters, chief mates, chief engineer officers, second engineer officers and any other person having responsibility for the safety of passengers in emergency situations on board Ro-Ro passenger vessels must have completed approved training in crisis management and human behaviour as specified in Subsection 5 of Section A-V/2 of the Code.

(8) The owner of a Ro-Ro passenger vessel must provide the Marine Board with documented detail evidence of the system of additional familiarisation training that is implemented for the vessel for the Marine Board's approval and records.

Fees

34. The fees payable for receiving applications, assessing competence and issuing certificates under this Part are as prescribed in Schedule VII.

Offences and penalties

35.—(1) A person who makes a false declaration for the purpose of obtaining a Certificate of Proficiency or endorsement issued under this Part commits an offence.

Penalty: A fine of up to \$1,000 or imprisonment for up to one month, or both.

(2) A person who obtains or uses forged documents or obtains documents by fraud for the purpose of obtaining a Certificate of Proficiency commits an offence.

Penalty: A fine of up to \$1,000 or imprisonment for up to one month, or both.

(3) A person who issues a false document or forges a document for the purpose of facilitating the issue of a Certificate of Proficiency commits an offence.

Penalty: A fine of up to \$1,000 or imprisonment for up to one month, or both.

Part VIII --MEDICAL STANDARDS

Purpose and application

36.—(1) This Part makes provision for medical standards required for seafarers serving aboard vessels registered or licensed in Fiji and for citizens of Fiji who are employed aboard any vessel and apply to—

- (a) designated physicians responsible for assessing medical fitness;
- (b) persons responsible for the recruitment and employment of seafarers;
- (c) owners and masters of ships registered or licensed in Fiji;
- (d) seafarers required by Part VI to hold a certificate and any other persons serving aboard Fiji vessels;
- (e) seafarers required by the Convention, STCW Regulations or Code to hold a certificate who are citizens of Fiji serving on any ship;
- (f) persons required by the Regulations to maintain registers and records pertaining to seafarers and their certificates.

(2) The vision and hearing requirements of these Regulations apply to seafarers who are employed in any capacity for which a certificate as master, mate, engineer or watchkeeper is required by Part VI.

Standards

37.—(1) The standards of medical fitness for seafarers required by Regulation I/9 of the Convention are as set out in Schedule VIII.

(2) Only a designated physician must conduct medical examinations and issue Medical Fitness Certificates to seafarers pursuant to Regulation I/9 of the Convention.

(3) A list of designated physicians must be maintained by the Administration and made available to other Parties to the Convention and to owners.

(4) Every person who is required to use spectacles or contact lenses to perform his or her duties must have a spare pair of spectacles or contact lenses conveniently available aboard ship.

(5) The eyes of every seafarer must be free of disease, and any permanent or progressive debilitating pathology without recovery is regarded as the cause for the determination of unfitness.

(6) Any information in respect of medical examinations must be provided to the Administration for inclusion in the register kept by the Registrar.

(7) A seafarer submitting to medical examination must declare any existing medical pre-condition or illness that might be a determinant of unfitness for duty.

Medical Fitness Certificates

38.—(1) Medical examinations required under this Part must be carried out in accordance with the "Physicians Guide to STCW-95".

(2) The physician must set out in the Medical Fitness Examination Report, in Form No. 1 as prescribed in Schedule IX, the physician's assessment of the seafarer's suitability as—

- (a) unfit for service at sea;
- (b) fit for service at sea, with limitations; or
- (c) fit for service at sea, without limitations.

(3) A physician who assesses a seafarer as fit for service at sea with limitations must state those limitations on the seafarer's Medical Fitness Certificate.

(4) A physician must, after completing the medical examination of a seafarer under these Regulations, issue a Medical Fitness Certificate to the seafarer in Form No. 2 prescribed in Schedule IX.

Duration of certificates

39.—(1) Except where a re-examination is required under regulation 40, and subject to subregulations (2) and (3), a Medical Fitness Certificate is valid—

- (a) in the case of a seafarer 40 years of age and over - for 2 years; and
- (b) in all other cases - from the time of issue, for 3 years.

(2) If appropriate, taking into account the state of health of the seafarer examined, a physician may issue a Medical Fitness Certificate that specifies a shorter period of validity than the period set out in subregulation (1).

(3) If the period of validity of a certificate expires in the course of a voyage, the certificate remains in force until the end of the voyage, or until the end of a further period of 3 months, whichever occurs first.

Re-examination

40.—(1) The Director may at any time require the re-examination of a seafarer—

- (a) if the Director has reason to believe that a re-examination is desirable in order to protect the safety of the vessel or of other seafarers on board the vessel;
- (b) at the request of the seafarer's employer, if the employer has grounds to believe that the seafarer's state of health may constitute a risk to the safety of the vessel or of other seafarers on board the vessel; or
- (c) at the request of the seafarer.

(2) A re-examination under this regulation must be conducted as if it were an original examination.

Review of a Medical Fitness Certificate

41.—(1) A seafarer may apply to the Director for a review by a reviewing physician of a Medical Fitness Certificate issued under this Part that indicates the seafarer is—

- (a) unfit for service at sea; or
- (b) fit for service at sea with limitations.

(2) The reviewing physician must be a designated physician.

(3) After reviewing a Medical Fitness Certificate and the state of health of the seafarer to whom it was issued, the reviewing physician may direct that a further medical examination be carried out and may stipulate the examination and the physician or organization to carry it out.

(4) The reviewing physician must—

- (a) confirm the Medical Fitness Certificate originally issued; or
- (b) where appropriate, based on further examinations conducted pursuant to subregulation (3), issue a new Medical Fitness Certificate in the form set out in Schedule X.

Appeal of a reviewed Medical Fitness Certificate

42.—(1) A seafarer who has requested a review of a Medical Fitness Certificate, may appeal to the Director for a further review of the case by an appeal board if the Medical Fitness Certificate confirmed or issued by the reviewing physician indicates that the seafarer is—

- (a) unfit for service at sea; or
- (b) fit for service at sea with limitations.

(2) An application for a review by an appeal board must be accompanied by a review fee prescribed in Schedule VII.

(3) On receipt of a request from a seafarer pursuant to subregulation (1), the Director must appoint an appeal board consisting of—

- (a) a representative of the Director;
- (b) a representative proposed by the employer of the seafarer; and
- (c) a representative proposed by the seafarer.

- (4) Every appeal board must be assisted in its deliberations by a designated physician.
- (5) An appeal board has the same power as a reviewing physician and may—
- (a) confirm the Medical Fitness Certificate issued or confirmed by the reviewing physician; or
 - (b) where appropriate issue a new Medical Fitness Certificate in the form set out in Schedule X.
- (6) An appeal board must record its decision and the reasons for it in writing and send a copy of it to the Director, to the seafarer and to the employer of the seafarer.

Costs of medical examinations for reviews and appeals

43. The costs of any medical examination conducted as a result of a review under regulation 41 or an appeal under regulation 42 must be borne by the applicant seafarer, in addition to the fee payable under regulation 42(2).

Medical Fitness Certificates required

44. A seafarer employed on a vessel to which the Convention applies must hold a valid Medical Fitness Certificate if the seafarer —
- (a) is required to be on board by virtue of the vessel's Safe Manning Certificate;
 - (b) has any responsibility on board relating to emergency procedures;
 - (c) has any watchkeeping responsibilities; or
 - (d) has any duties relating to the normal operation of the vessel.

Offences and penalties

45.—(1) An owner of a vessel to which these Regulations apply must not employ a person as a seafarer unless the seafarer produces his or her valid Medical Fitness Certificate issued under this Part attesting to the seafarer's fitness—

- (a) to perform the duties for which the seafarer is to be employed; and
- (b) to make the voyage to be undertaken by the vessel.

- (2) The owner of a vessel who contravenes subregulation (1) commits an offence.
Penalty: (i) in the case of an individual a fine of up to \$10,000 or imprisonment of up to 2 year, or both;
(ii) in the case of a body corporate a fine of up to \$40,000.

(3) A person must not accept employment as a seafarer on board a vessel in a capacity which requires a Medical Fitness Certificate unless the person holds a valid Medical Fitness Certificate issued under these Regulations.

- (4) A person who contravenes subregulation (3) commits an offence.
Penalty: A fine of up to \$1,000 or imprisonment for up to one month, or both.

- (5) A seafarer who fails to declare an existing medical pre-condition or illness that would otherwise have led to a determination of unfitness for duty commits an offence.
Penalty: A fine of up to \$1,000 or imprisonment for up to one month, or both.

Part IX—QUALITY STANDARDS

Purpose and application

46.—(1) The purpose of this Part is to ensure that all training, assessment of competence, certification, endorsement and revalidation activities are continuously monitored through a quality standards system to ensure achievement of the defined objectives, including those concerning the qualifications and the experience of instructors and Assessors in accordance with the Code.

(2) This Part applies to activities carried out by governmental agencies or entities and non-governmental agencies and entities involved in the training, assessment of competence, certification, endorsement and revalidation required under the Convention.

Quality standards

47.—(1) Quality standards must be established by the Administration in accordance with the guidelines set out in Section B-I/8 of the Code in respect of the training, examination and assessment of seafarers.

(2) Education and training objectives and related standards of competence must be clearly defined and the levels of understanding and the skills appropriate to the examinations and assessments required by the Convention must be identified by the Administration.

Evaluation

48.—The Minister must appoint competent persons, who are not themselves involved in the activities concerned, to conduct an independent evaluation of knowledge, understanding, skills and competence acquisition and assessment activities, and the administration of the certification system, at intervals of not less than 5 years in order to verify that—

- (a) all internal management control and monitoring measures and the follow-up actions comply with planned arrangements and documented procedures and are effective in ensuring achievement of the defined objectives;
- (b) the results of each independent evaluation are documented and brought to the attention of those responsible for the area evaluated; and
- (c) timely action is taken to correct deficiencies.

Reporting

49.—(1) The report on an evaluation under regulation 48 must be submitted to the Minister as soon as it is completed.

(2) Any information relating to an evaluation under regulation 48 must be communicated by the Administration to the Secretary-General of IMO.

Part X—INVESTIGATIONS AND MARINE INQUIRIES

Purpose and application

50.—(1) The purpose of this Part is to make provisions with respect to proceedings in any impartial investigation, carried out in accordance with Regulation I/5 of the Convention.

(2) This Part applies to holders of certificates or endorsements issued or recognised by the Marine Board in connection with—

- (a) their performance of duties related to their certificates;
- (b) the withdrawal, suspension and cancellation of certificates; and
- (c) the prevention of fraud.

Impartial Investigation

51.—(1) For the purpose of this Part, unless the context otherwise requires, an “impartial investigation” means an investigation into any reported incompetency, act or omission that may pose a direct threat to safety of life or property at sea or to the marine environment.

(2) The Marine Board may cause an impartial investigation to be held in accordance with section 88 of the Act.

(3) The processes and procedures to be followed when conducting such investigations must, as far as practicable be carried out in a manner laid down in the Marine (Preliminary Investigation Procedures) Regulations 1990.

Powers of impartial investigation as to Certificates of Competency

52.—(1) Where as a result of an impartial investigation, the Marine Board is satisfied that a qualified seafarer—

- (a) is unfit to discharge his or her duties because of incompetence or misconduct;
- (b) acted or failed to act in a certain way;
- (c) has been seriously negligent in the discharge of his or her duty; or
- (d) has failed to give any assistance or information required by Section 75 of the Act,

and, in a case under paragraph (a), (b) or (c), is further satisfied that the unfitness, action or negligence caused or contributed to or might have caused or contributed to the casualty, the Marine Board may—

- (i) recommend to the Minister to withdraw, cancel or suspend for a specified period any certificate of competency issued to the qualified seafarer concerned; or
- (ii) censure the seafarer concerned.

(2) The person conducting an inquiry or investigation must not recommend the cancellation or suspension of the certificate of any master or qualified seafarer, unless a statement of reasons for the decision has been furnished to the person holding the certificate and, where practicable, the person has had an opportunity to respond.

(3) If an inquiry or investigation is held, it is an offence for any person to—

(a) hinder or obstruct the person carrying out the inquiry or investigation;

(b) fail to answer any questions put by the person;

(c) fail to produce any document or certificate in his or her possession or control when requested to do so by the person.

Penalty: A fine of up to \$3,000 or imprisonment for up to 3 months, or both.

Suspension or cancellation of certificates

53.—(1) If, as a result of an impartial investigation, it appears to the Marine Board that the holder of certificate issued under regulation 19 is unfit to be the holder of the certificate for one of the reasons mentioned in regulation 52(1), the Marine Board may give the holder written notice that it is considering referring the withdrawal, suspension or cancellation of the certificate to the Minister.

(2) The notice referred to in subregulation (1) must—

(a) state the reasons why it appears to the Marine Board that the holder of a certificate is unfit to be the holder of the certificate; and

(b) state that within a period specified in the notice, being not less than 14 days, the holder may make written or oral representations to the Marine Board.

(3) After considering any representations made in accordance with subregulation (2)(b) the Marine Board must decide whether or not to refer the question of the withdrawal, suspension or cancellation of the certificate to the Minister and must give the holder written notice of its decision.

(4) If, in accordance with subregulation (3), the Marine Board decides to refer the question of the withdrawal, suspension or cancellation of a certificate to the Minister, the written notice given by the Marine Board under that subregulation must—

(a) state the reasons why it appears to the Marine Board that the holder is unfit to be the holder of the certificate; and

(b) state that—

(i) within a period specified in the notice, being not less than 14 days, the holder may make written representation to the Minister; or

(ii) the holder may appear before the Minister, either in person or by another person, when the Minister considers the reference.

(5) The Minister may consider any reference made by the Marine Board under this regulation and after considering any written representation made to the Minister by or on behalf of the holder of the relevant certificate must—

- (a) decide whether or not to withdraw, suspend or cancel the certificate; and
- (b) give the holder written notice of the decision.

(6) If in accordance with subregulation (5) the Minister decides to suspend or cancel a certificate, the notice given under paragraph (5)(b) must —

- (a) in the case of a decision to withdraw the certificate – state the date from which the withdrawal is to take effect;
- (b) in the case of a decision to suspend the certificate – state the date from which and the period for which the suspension is to take effect;
- (c) in the case of a decision to cancel the certificate – state the date from which the cancellation is to take effect; and
- (d) require the holder to deliver the certificate to the Director not later than the date specified in the notice in accordance with paragraph (a), (b) or (c).

(7) A person who fails to deliver a certificate in accordance with subregulation (6)(d) commits an offence.

Penalty: A fine of up to \$1,000.

Appeals

54.—(1) If the Minister suspends for a period exceeding 6 months or cancels a certificate of Competency under subregulation 53(5), the holder of the certificate may appeal to a Resident Magistrate against the decision within—

- (a) 30 days of the date on which notice of the Minister's decision is given in accordance with subregulation 53(5)(b);
- (b) such extended period as the court, on application made either before or after the period of 30 days referred to in paragraph (c), orders.

(2) On an appeal under subregulation (1) the court may—

- (a) confirm the decision of the Minister;
- (b) revoke the withdrawal, suspension or cancellation, as the case may be; or
- (c) vary the decision of the Marine Board in such a manner as it considers appropriate.

(3) A decision of the Court under subregulation (2) is deemed to be a decision of the Minister and must be given effect accordingly.

Immunities

55. A person conducting an inquiry or investigation is not liable to any action or suit for any act, matter or thing done, or ordered to be done, by the person in good faith in the execution of his or her duties.

Part XI — MARINE RADIO

Purpose

56. The purpose of this Part is to comply with the requirements of—

- (a) the Radio Regulations ;
- (b) the SOLAS Convention; and
- (c) the Convention

relating to the qualifications of radio personnel on ships.

Application

57. This Part applies to—

- (a) all ships registered or licensed in Fiji; and
- (b) all radio personnel employed on those ships.

Radio Regulations

58. The "Radio Regulations" means the Regulations annexed to the most recent Telecommunications Convention, as in force at any time are incorporated into and have the force of law in Fiji.

Certification of radio personnel

59.—(1) A seafarer in charge of or required to perform radio duties on a vessel which is required to participate in the GMDSS must hold an appropriate certificate related to the GMDSS, issued or recognised by the Marine Board under the provisions of the Radio Regulations.

(2) A candidate for a certificate referred to in subregulation (1) for service on a ship which is required by SOLAS to have a radio installation, must—

- (a) be not less than 18 years of age; and
- (b) have completed approved education and training sufficient to meet the standard of competence specified in Section A-IV/2 of the Code.

(3) Radio personnel on vessels not required to comply with the provisions of GMDSS in Chapter IV of SOLAS are not required to meet the provisions of these Regulations.

(4) Radio personnel on vessels mentioned in subregulation (3) must comply with the Radio Regulations.

(5) The Marine Board must ensure that the appropriate certificates as prescribed by the Radio Regulations are issued to or recognised in respect of such radio personnel.

Radio Certificates

60.—(1) A seafarer in charge of, or required to perform, radio duties operating with a GMDSS system must hold—

- (a) on vessels with a Cargo Ship Safety Radio Certificate or a Passenger Ship Safety Certificate valid for operation in area A1 only - at least a GMDSS Restricted Operators Certificate issued in accordance with Subsection D of Section III A of Article 55 of the Radio Regulations and Regulation IV/2 of STCW 95;
- (b) on vessels with a Cargo Ship Safety Radio Certificate or Passenger Ship Certificate valid for operations in areas A1+A2, A1+A2+A3 and A1+A2+A3+A4 - at least a GMDSS General Operators Certificate issued in accordance with Subsection C of Section IIIA of Article 55 of the Radio Regulations and Regulation IV/2 of STCW 95;
- (c) an endorsement to an appropriate certificate issued by a Party, which states that the holder is qualified to perform the radio-communication function at the operation level.

(2) Notwithstanding subregulation (1), vessels of 300 gross tonnage or more which operate with a GMDSS radio system in sea areas A2, A3 or A4 must carry either one first or second class radio electronics officer qualified in accordance with subregulation 1(b), who is not the master; or in lieu thereof 2 general operators, one of whom may be the master.

(3) Radio personnel on vessels not required to comply with the provisions of GMDSS in Chapter IV of the SOLAS Convention must hold appropriate certificates as prescribed by the Radio Regulations.

(4) Nothing in this regulation precludes the Marine Board or a person designated by it from varying the requirements for the number of radio personnel required to be carried, provided that those requirements comply with the Radio Regulations and the Convention.

Offences and penalties

61.—(1) The owner of a vessel must comply with all the obligations contained in this Part, the Convention, the STCW Regulations, the Code, and the Radio Regulations in respect of radio personnel on the vessel.

- (2) The owner of a vessel who contravenes subregulation (1) commits an offence.
 - Penalty: (i) in the case of an individual a fine of up to \$10,000 or imprisonment of up to 2 year, or both;
 - (ii) in the case of a body corporate a fine of up to \$40,000;
- Penalty: A fine of up to \$40,000 or imprisonment for up to 2 years, or both.

(3) The master of a vessel to which this Part applies must comply with all the obligations contained in this Part, the Convention, the STCW Regulations, the Code and the Radio Regulations in respect of radio certificates.

(4) A master who contravenes subregulation (3) commits an offence.
Penalty: A fine of up to \$10,000 or imprisonment for up to 1 year, or both.

(5) A seafarer on a vessel to which this Part applies must comply with all the obligations contained in this Part, the Convention, the STCW Regulations, the Code, and the Radio Regulations in relation to the operation of marine radio.

(6) A seafarer who contravenes subregulation (5) commits an offence.
Penalty: A fine of up to \$3,000 or imprisonment for up to 3 months, or both.

Part XII - TRANSITIONAL PROVISIONS AND REPEAL

Repeal and transitional

62. The following Regulations are repealed with effect from 1st February 2002:

- (a) The Marine (Certificates of Competency and Manning of Vessels) (General) Regulations 1989;
- (b) The Marine (Certificates of Competency (Authorised Capacities)) Regulations 1989;
- (c) The Marine (Certificates of Competency (Qualifications for Entry to Examinations) (Deck Officers)) Regulations 1989;
- (d) The Marine (Certificates of Competency (Qualifications for Entry to Examinations) (Engineering Officers)) Regulations 1989;
- (e) The Marine (Certificates of Competency (Required Qualifications (Ratings)) Regulations 1989;
- (f) The Marine (Certificates of Competency (Examination Syllabuses) (Deck Officers)) Regulations 1989;
- (g) The Marine (Certificates of Competency (Examination Syllabuses) (Engineering Officers)) Regulations 1989;
- (h) The Marine (Certificates of Competency (Supplementary Courses)) Regulations 1989;
- (i) The Marine (Certificates of Competency (Examination Procedures)) Regulations 1989;
- (j) The Marine (Fees) Regulations 1989;
- (k) The Marine (Manning of Vessels) Regulations 1989;

- (l) The Marine (Certificates of Competency (Tankers and Dangerous Cargoes)) Regulations 1989;
- (m) The Marine (Certificates of Competency (Transitional Provisions)) Regulations 1989;
- (n) The Marine (Medical Examination of Seafarers) Regulations 1989;
- (o) Regulations 2 and 3 Marine (Fiji Maritime Code) Regulations 1990;
- (p) Regulations 2 and 3 Marine (Fiji Small Craft Code) Regulations 1990;
- (q) Regulation 16 Marine (Masters & Seaman) Regulations 1990.

Existing certificates

63.—(1) After 1st February 2002 a seafarer holding an existing certificates must obtain a new certificate in compliance with the Convention, the STCW Regulations and the Code.

- (2) If any upgrading is required, it may be achieved by means of—
 - (a) an approved revalidation or upgrading course held at the School of Maritime Studies or an approved institution; or
 - (b) an approved period of sea-service on ships engaged on international voyages.
- (3) Subregulation (2)(b) applies only to—
 - (a) a seafarer holding A.B. or Motorman Certificate; and
 - (b) a seafarer who has sea service of at least 2 of the last 5 years on ships engaged in international voyages in the capacity of the certificate to be upgraded or revalidated.

(4) Notwithstanding subsection (1), if the circumstances admit, and there is no degradation of safety to the ship, crew, passengers or cargo, the Director may recognise an existing Certificate of Competency after 1 February 2002, provided that such recognition must not continue beyond 2007.

(5) The recognition under subregulation (4) applies only to Fiji seafarers working on vessels trading in Fiji waters.

SCHEDULE I
(Regulation 2(1))

Part I - SERVING CAPACITY AND STCW REGULATION ENDORSEMENT

SERVING CAPACITY, CERTIFICATES & LIMITATIONS			STCW REGS
Navigation			
Master	(Master Class 1)	>3000 gross tons - unlimited	II/2.1
Master	(Master Class 2)	<3000 gross tons - unlimited	II/2.3
Master	(Master Class 3/ Watchkeeper)	<500 gross tons - unlimited	II/3.2 & II/1
Master	(Master Class 4)	<500 gross tons - near coastal	II/3.5
Master	(Master Class 5)	80 gross tons or less - territorial waters	-
Master	(Master/Engineer Class 6)	20 gross tons or less - territorial waters	-
Master	(Master/Engineer Class 6 Restricted)	20 gross tons or less - inshore waters	-
Master	Boat Master's Licence	20 gross tons or less - sheltered waters	-
Chief Mate			
Chief Mate	(Class 1 Chief Mate)	>3000 gross tons	II/2.1
Chief Mate	(Class 2 Chief Mate)	500 - 3000 gross tons	II/2.3
Officer of the Watch			
Officer of the Watch	(Deck Watchkeeper)	>500 gross tons - unlimited	II/1
Officer of the Watch	(Master Class 3)	<500 gross tons - unlimited	II/3.1
Officer of the Watch	(Master Class 5)	<500 gross tons - near-coastal	II/3.3
Ratings forming part of a navigational watch	(Deck Watchkeeping Rating)	>500 gross tons - unlimited	II/4
Engineering			
Chief Engineer	(Chief Engineer Class 1)	>3000 kW - unlimited	III/2
Chief Engineer	(Chief Engineer Class 2)	750 - 3000 kW - unlimited	III/3
Chief Engineer	(Engineer Class 3/ Watchkeeper)	<750 kW - Unlimited	III/1
Engineer	(Engineer Class 3)	750 - 3000 kW - Near Coastal	-
Engineer	(Engineer Class 4)	<500 kW - Near Coastal	-
Engineer	(Engineer Class 5)	<250 kW - Territorial waters	-
Engineer	(Master/Engineer Class 6)	<20 gross tons - Territorial waters	-
Engineer	(Master/Engineer Class 6 Restricted)	20 gross tons or less - Inshore waters	-
Second Engineer			
Second Engineer	(Second Engineer Class 1)	>3000 kW	III/2
Second Engineer	(Second Engineer Class 2)	750 - 3000 kW	III/3
Officer of the Watch	(Engineer watchkeeper)	>750 kW	III/1
Ratings forming part of an engineering watch	(Engine Watchkeeping Rating)	>750 kW	III/4

**Part I – MANDATORY SHORT COURSES AND STCW REGULATION
ENDORSEMENT**

MANDATORY SHORT COURSES	STCW REGULATION
Basic Safety Training - all new entrants	
Familiarisation and basic safety training	VI/1
(Safety Certificate)	
Personal survival techniques	VI/1-1
Fire Prevention & Fire fighting	VI/1-2
Elementary first-aid	VI/1-3
Personal safety and social responsibilities (Occupational Health & Safety)	VI/1-4
Survival	
Proficiency in survival craft and rescue boats other than fast rescue boats	VI/2
Proficiency in fast rescue boats	VI/2
Radio	
Radio communication personnel	
GMDSS - General Operator's Certificate – (GOC)	IV/2
GMDSS – Restricted Operator's Certificate – (ROC)	IV/2
Fire-fighting	
Advanced fire-fighting	VI/3
Medical	
Medical first-aid	VI/4
Medical care	VI/4
SPECIAL TRAINING REQUIREMENTS	
Tankers	
Tanker familiarisation	V/1
Advanced tanker safety	V/1
RO-RO & Passenger Ships	
Crowd Management for passengers and RO-RO ships	V/2
Crisis Management for passenger and RO-RO ships	V/2

SCHEDULE II
(Regulation 15 (1))

MANNING REQUIREMENTS AND CLASSES OF CERTIFICATES

1. The number of persons holding the requisite certificates for service on vessels to which these regulation apply must be in accordance with the following Tables for the type of voyage.
2. The Administration may impose additional operating limits on vessels depending on type, operational aspects, etc.

Part 1 - DECK CERTIFICATES - UNLIMITED VOYAGES
Minimum Qualification

SHIP GROSS TONNAGE (GT)	MASTER	CHIEF MATE (As required)	W/KEEPER (As required)	ADDITIONAL W/KEEPER (As required)	W/KEEPER RATINGS (As required)
> 7000	Master Class 1	Mate Class 1	Deck Watchkeeping Officer	Deck Watchkeeping Officer	Deck Watchkeeping Rating
7000 - >3000	Master Class 1	Mate Class 1	Deck Watchkeeping Officer	Deck Watchkeeping Officer	Deck Watchkeeping Rating
3000 - >1600	Master Class 2	Mate Class 2	Deck Watchkeeping Officer	Deck Watchkeeping Officer	Deck Watchkeeping Rating
1600 - >500	Master Class 2	Mate Class 2	Deck Watchkeeping Officer	Deck Watchkeeping Officer	Deck Watchkeeping Rating
500 - >80	Master Class 3 +(Endorsed)	Master Class 3 +(Endorsed)	Deck Watchkeeping Officer		Deck Watchkeeping Rating
80 - >20	Master Class 3 +(Endorsed)	Master Class 3 +(Endorsed)	Master Class 3		Deck Watchkeeping Rating
20 or less	Master Class 3 +(Endorsed)	Master Class 3			Deck Watchkeeping Rating

y: > More than; < Less than

Note: Master Class 3 +(Endorsed) = Master Class 3 & Watchkeeper Deck endorsement - for issue of an endorsement to serve in this capacity the person must meet the sea service requirements specified in STCW 95 appropriate to that certificate. Accompanied by documentary evidence in accordance with watchkeeping experience.

Part 2 - DECK CERTIFICATES - NEAR-COASTAL VOYAGES
Minimum Qualification

SHIP GROSS TONNAGE (Gross Tons)	MASTER	CHIEF MATE (As required)	W/KEEPER (As required)	ADDITIONAL W/KEEPER (As required)	W/KEEPER RATINGS (As required)
> 7000	Master Class 1	Mate Class 1	Deck Watchkeeping Officer	Deck Watchkeeping Officer	Deck Watchkeeping Rating
7000 - >3000	Master Class 2	Mate Class 2	Deck Watchkeeping Officer	Deck Watchkeeping Officer	Deck Watchkeeping Rating
3000 - >1600	Master Class 2 or Class 3 Master +(Endorsed)	Master Class 3	Master Class 4	Deck Watchkeeping Officer	Deck Watchkeeping Rating
1600 - >500	Master Class 3	Master Class 4	Master Class 5	Deck Watchkeeping Officer	Deck Watchkeeping Rating
500 - >80	Master Class 4	Master Class 4	Master Class 5		Deck Watchkeeping Rating
80 - >20	Master Class 4 or Master Class 5 ++(Endorsed)	Master Class 5	Master Class 5		Deck Watchkeeping Rating
20 or less	Master Class 5 ++(Endorsed)	Master Class 5			Deck Watchkeeping Rating

Key: > More than; < Less than

Note: Master Class 3 +(Endorsed) = Master Class 3 & Watchkeeper Deck endorsement - for issue of an endorsement to serve in this capacity the person must meet the sea service requirements specified in STCW 95 appropriate to that certificate. Accompanied by documentary evidence in accordance with watchkeeping experience.

Master Class 5 ++(Endorsed) = Master Class 5 endorsed for operations in near-coastal waters on successful completion of the Master Class 4 assessment in Navigation & Position Determination - for issue of an endorsement to serve in this capacity the person must meet the sea service requirements specified in STCW 95 appropriate to that certificate. Accompanied by documentary evidence in accordance with watchkeeping experience.

The Administration may impose additional operating limits on vessels operating in Near-Coastal Waters.

Part 3 - DECK CERTIFICATES - TERRITORIAL WATERS VOYAGES
Minimum Qualification

SHIP'S GROSS TONNAGE (GT)	MASTER	CHIEF MATE (As required)	W/KEEPER (As required)	ADDITIONAL W/KEEPER (As required)	W/KEEPER RATINGS (As required)
> 7000	Master Class 1	Mate Class 1	Deck Watchkeeping Officer	Deck Watchkeeping Officer	Deck Watchkeeping Rating
7000 - >3000	Master Class 2	Mate Class 2	Deck Watchkeeping Officer	Deck Watchkeeping Officer	Deck Watchkeeping Rating
3000 - >1600	Master Class 3	Master Class 3	Master Class 4	Deck Watchkeeping Officer	Deck Watchkeeping Rating
1600 - >500	Master Class 4	Master Class 4	Master Class 5	Deck Watchkeeping Officer	Deck Watchkeeping Rating
500 - >80	Master Class 4	Master Class 5	Master Class 5		Deck Watchkeeping Rating
80 - >20	Master Class 5	Master Class 5			Deck Watchkeeping Rating
20 or less (15m open boat or less)	Master/Engineer Class 6	Master/Engineer Class 6			Deck Watchkeeping Rating

Key: > More than; < Less than

Note: Master Class 3 +(Endorsed) = Master Class 3 & Watchkeeper Deck endorsement - for issue of an endorsement to serve in this capacity the person must meet the sea service requirements specified in STCW 95 appropriate to that certificate. Accompanied by documentary evidence in accordance with watchkeeping experience.

The Administration may impose additional operating limits on vessels operating in Territorial Waters.

Part 4 - DECK CERTIFICATES - INSHORE VOYAGES
Minimum Qualification

SHIP GROSS TONNAGE (GT)	MASTER	CHIEF MATE (As required)	W/KEEPER (As required)	ADDITIONAL W/KEEPER (As required)	W/KEEPER RATINGS (As required)
> 7000	Master Class 1	Master Class 2	Deck Watchkeeping Officer	Deck Watchkeeping Officer	Deck Watchkeeping Rating
7000 - >3000	Master Class 2	Master Class 3	Deck Watchkeeping Officer	Deck Watchkeeping Officer	Deck Watchkeeping Rating
3000 - >1600	Master Class 3	Master Class 4	Master Class 4	Deck Watchkeeping Officer	Deck Watchkeeping Rating
1600 - >500	Master Class 4	Master Class 4	Master Class 5	Deck Watchkeeping Officer	Deck Watchkeeping Rating
500 - >80	Master Class 5	Master Class 5	Master Class 5		Deck Watchkeeping Rating
80 - >20	Master Class 5	Master/Engineer Class 6			Deck Watchkeeping Rating
20 or less (15m open boat or less)	Restricted Master/Engineer Class 6				Deck Watchkeeping Rating

Key: > More than; < Less than

Note: The Administration may impose additional operating limits on vessels operating on Inshore Waters.

Part 5 - DECK CERTIFICATE - SHELTERED WATERS
Minimum Qualification

SIZE - Small Boat	MASTER
20 GT or less OR (15m open boat or less)	Boat Master's Licence

Note: The Administration may impose additional operating limits on vessels operating on Sheltered Waters.

Part 6 - FISHING CERTIFICATES - FISHING VESSELS ON UNLIMITED VOYAGES

Minimum Qualification

SHIPS GROSS TONNAGE (GT) or (Length)	MASTER	CHIEF MATE (As required)	W/KEEPER (As required)	ADDITIONAL W/KEEPER (As required)	FISHING DECKHANDS (As required)
1600 - >500 GT (75 - >60m)	Deep Sea Skipper or Master Class 3 (Endorsed)	Deep Sea Mate or Watchkeeper	Master Class 3 (F)		2 Holding PIQFD, all other to hold Safety Certificate

Key: > more than < less than

Note: Master Class 3 +(Endorsed) = Master Class 3 & Watchkeeper Deck endorsement - for issue of an endorsement to serve in this capacity the person must meet the sea service requirements specified in STCW 95 appropriate to that certificate. Accompanied by documentary evidence in accordance with watchkeeping experience.

Part 7 - FISHING CERTIFICATES - FISHING VESSELS ON NEAR-COASTAL VOYAGES

Minimum Qualification

SHIPS GROSS TONNAGE (GT) or (Length)	MASTER	CHIEF MATE (As required)	W/KEEPER (As required)	ADDITIONAL W/KEEPER (As required)	FISHING DECKHANDS (As required)
1600 - >500 GT or (75 - >60m)	Master Class 3 (F)	Master Class 4 (F)	Master Class 5 (F)		2 Holding PIQFD, all other to hold Safety Certificate
500 - >80 (60 - >25m)	Master Class 4 (F)	Master Class 5 (F)	Master Class 5 (F)		All to hold Safety Certificate
80 - >20 (25 - >15m)	Master Class 5 (F) ++(Endorsed)	Master Class 5 (F)			All to hold Safety Certificate
20 GT or less (15 metres or less)	Master Class 5 (F) ++(Endorsed)	Master/Engineer Class 6 (F)			All to hold Safety Certificate

Key: > more than < less than

**Part 8 - FISHING CERTIFICATES - FISHING VESSELS ON TERRITORIAL
WATERS VOYAGES**
Minimum Qualification

SHIPS GROSS TONNAGE (GT) or (Length)	MASTER	CHIEF MATE (As required)	W/KEEPER (As required)	ADDITIONAL W/KEEPER (As required)	FISHING DECKHANDS (As required)
1600 - >500 or (75 - >60m)	Master Class 4 (F)	Master Class 4 (F)	Master Class 5 (F)		2 Holding PIQFD, all other to hold Safety Certificate
500 - >80 (60 - >25m)	Master Class 4 (F)	Master Class 5 (F)	Master Class 5 (F)		All to hold Safety Certificate
80 - >20 (25 - >15m)	Master Class 5 (F)	Master Class 5 (F)			All to hold Safety Certificate
20 GT or less (15 metres or less)	Master/ Engineer Class 6 (F)	Master/ Engineer Class 6 (F)			All to hold Safety Certificate

Key: > more than < less than

Note: The Administration may apply restrictions to the areas of operation for vessels below 20GT/15m

Part 9 - FISHING CERTIFICATES - FISHING VESSELS ON INSHORE VOYAGES
Minimum Qualification

SHIP GROSS TONNAGE (Length)	MASTER	CHIEF MATE (As required)	W/KEEPER (As required)	ADDITIONAL W/KEEPER (As required)	W/KEEPER RATINGS (As required)
1600 - >500 GT (75 - >60m)	Master Class 4 (F)	Master Class 4 (F)	Master Class 5 (F)	Deck Watchkeeping Officer	Deck Watchkeeping Rating
<500 - 80 (25-60m)	Master Class 5 (F)	Master Class 5 (F)			Deck Watchkeeping Rating
< 80 to 20 (15-25m)	Master Class 5 (F)	Master/ Engineer Class 6 (F)			Deck Watchkeeping Rating
20 GT or less (15 metres or less)	Restricted Master/ Engineer Class 6 (F)				Deck Watchkeeping Rating

Key: > More than; < Less than

Note: The Administration may impose additional operating limits on vessels operating on Inshore and Sheltered Waters.

Part 10 - ENGINEERING CERTIFICATES - UNLIMITED VOYAGES
Minimum Qualification

ENGINE POWER (kilowatts)	CHIEF ENGINEER	SECOND ENGINEER (As required)	W/KEEPER (As required)	ADDITIONAL W/KEEPER (As required)	W/KEEPING RATINGS (As required)
> 6000 kW	Engineer Class 1	2 nd Engineer Class 1	Engineer Watchkeeper	Engineer Watchkeeper	Engine Watchkeeping Rating
6000 - >3000	Engineer Class 1	2 nd Engineer Class 1	Engineer Watchkeeper	Engineer Watchkeeper	Engine Watchkeeping Rating
3000 - >1500	Engineer Class 2	2 nd Engineer Class 2	Engineer Watchkeeper	Engineer Watchkeeper	Engine Watchkeeping Rating
1500 - >750	Engineer Class 2	2 nd Engineer Class 2	Engineer Watchkeeper	Engineer Class 3	Engine Watchkeeping Rating
750 - >500	Engineer Class 3 *(Endorsed)	Engineer Class 3 *(Endorsed)	Engineer Class 3		Engine Watchkeeping Rating
500 - >250	Engineer Class 3 *(Endorsed)	Engineer Class 3	Engineer Class 3		Engine Watchkeeping Rating
250 or less	Engineer Class 3 *(Endorsed)	Engineer Class 3			Engine Watchkeeping Rating

Key: > More than; < Less than

Note: Engineer Class 3 *(Endorsed) = Engineer Class 3 & Watchkeeper Engineer endorsement - for issue of an endorsement to serve in this capacity the person must meet the sea service requirements specified in STCW 95 appropriate to that certificate. Accompanied by documentary evidence in accordance with watchkeeping experience.

Part 11 - ENGINEERING CERTIFICATES -NEAR COASTAL VOYAGES
Minimum Qualification

ENGINE POWER (kilowatts)	CHIEF ENGINEER	SECOND ENGINEER (As required)	W/KEEPER (As required)	ADDITIONAL W/KEEPER (As required)	W/KEEPING RATINGS (As required)
> 6000 kW	Engineer Class 1	Engineer. Class 2	Engineer. Class 3 *(Endorsed)	Engineer Watchkeeper	Engine Watchkeeping Rating
6000 - >3000	Engineer. Class 2	Engineer Class 3 *(Endorsed)	Engineer Class 3 *(Endorsed)	Engineer Watchkeeper	Engine Watchkeeping Rating
3000 - >1500	Engineer. Class 3 *(Endorsed)	Engineer Class 3	Engineer Class 3		Engine Watchkeeping Rating
1500 - >750	Engineer Class 3	Engineer Class 3			Engine Watchkeeping Rating
750 - >500	Engineer Class 4	Engineer Class 4			Engine Watchkeeping Rating
500 - >250	Engineer Class 4	Engineer Class 5			Engine Watchkeeping Rating
250 or less	Engineer Class 5				Engine Watchkeeping Rating

Key: > More than; < Less than

Note: Engineer Class 3 *(Endorsed) = Engineer Class 3 & Watchkeeper Engineer endorsement - for issue of an endorsement to serve in this capacity the person must meet the sea service requirements specified in STCW 95 appropriate to that certificate. Accompanied by documentary evidence in accordance with watchkeeping experience.

The Administration may impose additional operating limits on vessels operating in Near Coastal Waters.

Part 12 - ENGINEERING CERTIFICATES - TERRITORIAL WATERS VOYAGES
Minimum Qualification

ENGINE POWER (kilowatts)	CHIEF ENGINEER	SECOND ENGINEER (As required)	W/KEEPER (As required)	ADDITIONAL W/KEEPER (As required)	W/KEEPING RATINGS (As required)
> 6000 kW	Engineer Class 1	Engineer Class 2	Engineer Class 3	Engineer Watchkeeper	Engine Watchkeeping Rating
6000 - >3000	Engineer Class 2	Engineer Class 3	Engineer Class 3	Engineer Watchkeeper	Engine Watchkeeping Rating
3000 - >1500	Engineer Class 3	Engineer Class 3			Engine Watchkeeping Rating
1500 - >750	Engineer Class 3	Engineer Class 4			Engine Watchkeeping Rating
750 - >500	Engineer Class 4	Engineer Class 4			Engine Watchkeeping Rating
0 - >250	Engineer Class 4	Engineer Class 5			Engine Watchkeeping Rating
250 or less	Engineer Class 5				Engine Watchkeeping Rating
20 GT or less	Master/ Engineer Class 6				

Key: > More than; < Less than

Notes: The Administration may impose additional operating limits on vessels operating in Territorial Waters.

Part 13 - ENGINEERING CERTIFICATES - INSHORE VOYAGES
Minimum Qualification

ENGINE POWER (kilowatts)	CHIEF ENGINEER	SECOND ENGINEER (As required)	W/KEEPER (As required)	ADDITIONAL W/KEEPER (As required)	W/KEEPING RATINGS (As required)
> 6000 kW	Engineer Class 1	Engineer Class 2			Engine Watchkeeping Rating
6000 - >3000	Engineer Class 2	Engineer Class 3			Engine Watchkeeping Rating
3000 - >1500	Engineer Class 3	Engineer Class 4			Engine Watchkeeping Rating
1500 - >750	Engineer Class 4	Engineer Class 4			Engine Watchkeeping Rating
750 - >500	Engineer Class 4	Engineer Class 5			Engine Watchkeeping Rating
500 - >250	Engineer Class 5				Engine Watchkeeping Rating
250 or less	Master/ Engineer Class 6				Engine Watchkeeping Rating
20 GT or less	Restricted Master/ Engineer Class 6				

Key: > More than; < Less than

Notes: The Administration may impose additional operating limits on vessels operating on Inshore and Sheltered Waters.

SCHEDULE III
(Regulation 15(2))**NUMBER OF CERTIFICATES OF PROFICIENCY - PASSENGER VESSELS**

TYPE AND CHARACTERISTICS OF SURVIVAL CRAFT OR SYSTEM	QUALIFIED PERSONS
Lifeboat boarded at the stowed position and capable of being released and lowered from inside	2 per boat
Lifeboat boarded at stowed position and capable of being lowered from inside after being released externally	2 persons, plus 1 for every two boats
Lifeboat, both released and lowered from the vessel	3 per boat
Liferaft	1 per liferaft
Davit-launched Liferaft	1 per liferaft, plus 1 for each davit
Marine escape system	4 per system, plus 1 for each raft associated with each system

SCHEDULE IV
(Regulation 15(5))
SAFE MANNING CERTIFICATE

<p align="center">Fiji Marine Board SAFE MANNING CERTIFICATE MARINE (STCW CONVENTION) REGULATIONS 2001</p>					
Fiji Islands Maritime Safety Administration G.P.O. Box 326 Suva, Fiji			Telephone: (679) 315 266 or 311 188 Fax No: (679) 303 251 or 304 449 E-Mail: fimsa@is.com.fj		
Name and Call Sign of Vessel :					
Official / IMO Number:					
Vessel Type / Class :					
Port of Registry :					
Trading Area :					
Gross Tonnage :					
Total Propulsion Power :					
Length Overall :					
Owner & Address :					

The above named vessel is safely manned for the type of operation described below in accordance with the Marine Act 1986, the STCW 1995 Convention, Regulations and Code.

POSITION	QUALIFICATION & NUMBER				
	Unlimited Waters	Near Coastal Waters	Territorial Waters	Inshore Waters	Sheltered Waters
Master					
Chief Mate					
Deck Watchkeeper					
Extra Deck W/keeper					
Radio Personnel					
Chief Engineer					
Second Engineer					
Engineer Watchkeeper					
Extra Eng Watchkeeper					
Deck Watch Rating					
Engine Watch Rating					
Qualified Cook					
TOTAL CREW					
MAX PASSENGERS					

[Delete as required]

Conditions and Limitations:

- All crew members must meet the requirements regarding safety training and qualifications according to Regulations in force. Included among the above Ratings there shall be ___ holding the Proficiency in Survival Craft Course Certificate and at least ___ holding the Safety Certificate.
- This Certificate is valid for 2 years. It will be renewed as long as there is no material change in safety equipment, or the construction of the ship, or in its passenger or cargo carrying capacity or its commercial purpose.

Signed Date

President, Fiji Marine Board
Name: _____ Date _____

[Official Seal]

SCHEDULE V
(Regulation 19(3))

Part I - CLASSES OF CERTIFICATES AND THE PRE-REQUISITES FOR THEIR ISSUE

1. General

A Candidate for certification must provide satisfactory proof -

- (a) of his or her identity;
- (b) that his or her age is not less than that prescribed in the Schedule relevant to the certificate applied for;
- (c) that he or she meets the standards of medical fitness, particularly regarding eyesight and hearing, established by the Minister, and holds a valid document attesting to his medical fitness, issued by a designated physician;
- (d) that he or she has completed the seagoing service and any related compulsory training required by the Regulations for the certificate applied for; and
- (e) that he or she meets the standards of competence prescribed by this Schedule for the capacities, functions and levels that are to be specified in the endorsement to the certificate.
- (f) Course modules are valid for 5 years from the date of commencement to the date of passing the module.

2. Requirements for Minimum Age and Sea service.

DECK CERTIFICATES

MASTER CLASS 1

Minimum Age: Not prescribed.

Prerequisite Certificate: Mate Class 1, Master Class 2 and meet the requirement for certification of an officer in charge of a navigational watch of ships not less than 500 gross tonnage and have approved seagoing service in that capacity

Required Sea Service:

Either:

- (a) none, but candidate must hold a Master Class 2 certificate of competency; or
- (b) 36 months approved seagoing service in charge of a navigation watch on ships 500 gross tonnage or over while holding a certificate of competency not lower than Deck Watchkeeper; or

- (c) 24 months approved seagoing service whilst holding a certificate of competency as Mate Class 1. This period may be reduced to 12 months provided 12 months of seagoing service has been served as Chief Mate;
- (d) in the case of (a), (b) or (c) at least 12 months must have been served on trading ships of 3000 gross tonnage or over.

Course of Study

Must have satisfactorily completed an appropriate course of study that at least meets the standards specified in Table A-II/2 of the Code and includes management training and knowledge of the International Safety Management Code and includes practical training in ARPA, radar and electronic navigation.

Must hold the following current Certificates:

- (a) valid certificate of medical fitness for service in the deck department;
- (b) certificate of proficiency in survival craft and rescue boats other than fast rescue boats. Section A-VI/2 of the Code;
- (c) First Aid at Sea. Section A-VI/4-1 of the Code;
- (d) Advanced Fire Fighting and Control. Section A-VI/3 of the Code;
- (e) Occupational Health and Safety. Section A-VI/1-4 of the Code;
- (f) GMDSS General Operator's Certificate.

Examination

Must have passed a written, oral and practical examination in appropriate operational knowledge conducted by an approved Examiner.

MATE CLASS 1

Minimum Age: Not prescribed.

Prerequisite Certificate: Mate Class 2 or Deck Watchkeeper-Deck.

Required Sea Service:

12 months approved seagoing service in charge of a navigation watch on a vessel of 500 gross tonnage or over whilst holding a certificate of competency not lower than Deck Watchkeeper.

Course of Study

Must have satisfactorily completed an appropriate course of study that at least meets the standards specified in Table A-II/2 of the Code and includes management training and knowledge of the International Safety Management Code and includes practical ARPA, radar and electronic navigation;

Must hold the following current Certificates:

- (a) valid certificate of medical fitness for service in the deck department;
- (b) certificate of proficiency in survival craft and rescue boats other than fast rescue boats. Section A-VI/2 of the Code;
- (c) First Aid at Sea. Section A-VI/4-1 of the Code;
- (d) Advanced Fire Fighting and Control. Section A-VI/3 of the Code;
- (e) Occupational Health and Safety. Section A-VI/1-4 of the Code;
- (f) GMDSS General Operator's Certificate.

Examination

Must have passed a written, practical and oral examination in appropriate operational knowledge conducted by an approved Examiner.

MASTER CLASS 2

Minimum Age: Not prescribed.

Prerequisite Certificate: Mate Class 1, Mate Class 2 or Deck Watchkeeper.

Required Sea Service:

Either:

- (a) 36 months approved seagoing service in charge of a navigation watch on ships of 500 gross tonnage or over while holding a certificate of competency not lower than Deck Watchkeeper; or
- (b) 24 months approved seagoing service whilst holding a certificate of competency as Mate Class 1 or Mate Class 2 on ships of 500 gross tonnage. This period may be reduced to 12 months provided 12 months of seagoing service has been served as Chief Mate;

Course of Study

Must have satisfactorily completed an appropriate course of study that at least meets the standards specified in Table A-II/2 of the Code and includes management training and

knowledge of the International Safety Management Code and includes practical training in ARPA, radar and electronic navigation;

Must hold the following current Certificates:

- (a) valid certificate of medical fitness for service in the deck department;
- (b) certificate of proficiency in survival craft and rescue boats other than fast rescue boats. Section A-VI/2 of the Code;
- (c) First Aid at Sea. Section A-VI/4-1 of the Code;
- (d) Advanced Fire Fighting and Control. Section A-VI/3 of the Code;
- (e) Occupational Health and Safety. Section A-VI/1-4 of the Code;
- (f) GMDSS General Operator's Certificate-Section A-IV/2 of the Code.

Examination

Must have passed an oral examination in operational knowledge conducted by an approved Examiner.

MATE CLASS 2

Minimum Age: Not prescribed.

Prerequisite Certificate: Deck Watchkeeper.

Required Sea Service:

12 months approved seagoing service in charge of a navigation watch on ships 500 gross tonnage or over while holding a certificate of competency not lower than Deck Watchkeeper.

Course of Study

Must have satisfactorily completed an appropriate course of study that at least meets the standards specified in Table A-II/2 of the Code and includes management training and knowledge of the International Safety Management Code and includes practical training in ARPA, radar and electronic navigation;

Must hold the following current Certificates:

- (a) valid certificate of medical fitness for service in the deck department;
- (b) certificate of proficiency in survival craft and rescue boats other than fast rescue boats. Section A-VI/2 of the Code;
- (c) First Aid at Sea. Section A-VI/4-1 of the Code;

- (d) Advanced Fire Fighting and Control. Section A-VI/3 of the Code;
- (e) Occupational Health and Safety. Section AVI/1-4 of the Code;
- (f) GMDSS General Operator's Certificate.

Examination

Must have passed a written, practical and oral examination in appropriate operational knowledge conducted by an approved Examiner.

DECK WATCHKEEPER

(Note: a Master Class 3 may gain cross credit to Deck Watchkeeper).

Minimum Age: 18 years.

Prerequisite Certificate: Not prescribed

Required Sea Service:

Either:

- (a) 36 months approved service; or
- (b) have approved seagoing service of not less than one year as part of an approved training programme which include on-board training which meets the requirements of section A-II/1 of the Code and is documented in an approved training record book. During the approved seagoing service, the candidate should have performed bridge watchkeeping duties under the supervision of a master or qualified officer for a period of not less than six months.

In either case, (a) or (b), not less than 6 months of seagoing service must be performed in vessels of more than 500 gross tonnage on Unlimited voyages.

Course of Study

Must have satisfactorily completed an appropriate course of study that at least meets the standards specified in Table A-II/1 of the Code and includes practical training in ARPA, radar and electronic navigation;

Must hold the following current Certificates:

- (a) valid certificate of medical fitness for service in the deck department;
- (b) certificate of proficiency in survival craft and rescue boats other than fast rescue boats. Section A-VI/2 of the Code;
- (c) First Aid at Sea. Section A-VI/4-1 of the Code;

- (d) Advanced Fire Fighting and Control. Section A-VI/3 of the Code;
- (e) Occupational Health and Safety. Section AVI/1-4 of the Code;
- (f) GMDSS General Operator's Certificate.

Examination

Must have passed a written, practical and an oral examination in appropriate operational knowledge conducted by an approved Examiner.

MASTER CLASS 3

Note: a Master Class 3 may gain cross credit to a Deck Watchkeeper, but must have completed at least 6 months approved seagoing service on ships of more than 500 gross tonnage which includes onboard training documented in an approved training record book.

Minimum Age: Not prescribed.

Prerequisite Certificate: Master Class 4.

Required Sea Service

12 months approved seagoing service as a watchkeeping officer whilst holding a Certificate of Competency not lower than a Master Class 4.

Not less than 6 months of seagoing service must be performed on vessels of more than 500 gross tonnage.

Remission of seagoing service may be allowed for attendance at approved training courses.

This service may be performed either in or out of the Near-coastal Trading Area.

Course of Study

Must have satisfactorily completed an appropriate course of study that at least meets the standards specified in Section A-II/3 of the Code for masters on ships engaged in Near-coastal voyages.

Must hold the following current Certificates:

- (a) valid certificate of medical fitness for service in the deck department;
- (b) certificate of proficiency in survival craft and rescue boats other than fast rescue boats. Section A-VI/2 of the Code;
- (c) First Aid at Sea. Section A-VI/4-1 of the Code;
- (d) Advanced Fire Fighting and Control. Section A-VI/3 of the Code;

- (e) Occupational Health and Safety. Section AVI/1-4 of the Code;
- (f) GMDSS General Operator's Certificate.

Examination

Must have passed a written, practical and an oral examination in appropriate operational knowledge conducted by an approved Examiner.

MASTER CLASS 4

Minimum Age: 20 years.

Prerequisite Certificate: Master Class 5

Required Sea Service:

12 months approved seagoing service as a watchkeeping officer holding a Certificate of Competency not lower than a Master Class 5.
Remission of seagoing service may be allowed for attendance at approved training courses.

This service may be performed either in or out of the Near-coastal Trading Area.

Course of Study

Must have satisfactorily completed an appropriate course of study that at least meets the standards specified in Section A-II/3 of the Code for masters on ships engaged in Near-coastal voyages.

Must hold the following current Certificates:

- (a) valid certificate of medical fitness for service in the deck department;
- (b) certificate of proficiency in survival craft and rescue boats other than fast rescue boats. Section A-VI/2 of the Code;
- (c) First Aid at Sea. Section A-VI/4-1 of the Code;
- (d) Advanced Fire Fighting and Control. Section A-VI/3 of the Code;
- (e) Occupational Health and Safety. Section AVI/1-4 of the Code;
- (f) GMDSS General Operator's Certificate.

Examination

Must have passed a written, practical and an oral examination in appropriate operational knowledge conducted by an approved Examiner.

MASTER CLASS 5

Minimum Age: 18 years.

Prerequisite Certificate: Safety Certificate

Required Sea Service:

Either

- (a) 30 months approved seagoing service whilst holding a Certificate of Competency not lower than a Safety Certificate; or
- (b) 18 months approved seagoing service whilst holding a Certificate of Competency not lower than Master/Engineer Class 6.; or
- (c) 18 months approved seagoing service whilst holding a Certificate of Competency not lower than Watchkeeping Rating.

Remission of seagoing service may be allowed for attendance at approved training courses. This service may be performed either in or out of the Near-coastal Trading Area.

Course of Study

Must have satisfactorily completed an appropriate course of study that at least meets the standards specified in Section A-II/3 of the Code for officers in charge of navigational watch on ships engaged in Near-coastal voyages.

Hold the following current Certificates:

- (a) valid certificate of medical fitness for service in the deck department;
- (b) certificate of proficiency in survival craft and rescue boats other than fast rescue boats. Section A-VI/2 of the Code;
- (c) First Aid at Sea. Section A-VI/4-1 of the Code;
- (d) Advanced Fire Fighting and Control. Section A-VI/3 of the Code;
- (e) Occupational Health and Safety. Section AVI/1-4 of the Code;
- (f) GMDSS Restricted Operators Certificate.

Examination

Must have passed a written, practical and an oral examination in appropriate operational knowledge conducted by an approved Examiner.

MASTER/ENGINEER CLASS 6

Minimum Age: 18 years.

Prerequisite Certificate: Safety Certificate.

Required Sea Service: 12 months approved sea service whilst holding a Safety Certificate.

Course of Study

Must have satisfactorily completed an appropriate course of study that at least meets the standards specified in the Secretariat of the Pacific Community module Courses.

Must hold the following current Certificates:

- (a) valid certificate of medical fitness for service in the deck department;
 - (b) Survival techniques Section A-VI/1-1 of the Code;
 - (c) Basic First Aid at Sea. Section A-VI/1-3 of the Code;
 - (d) Fire Prevention and Firefighting. Section A-VI/1-2 of the Code;
 - (e) Occupational Health and Safety. Section A-VI/1-4 of the Code;
- GMDSS Restricted Operators Certificate.

Examination

Must have passed a written, practical and an oral examination in appropriate operational knowledge conducted by an approved Examiner.

RESTRICTED MASTER/ENGINEER CLASS 6

Minimum Age: 18 years.

Prerequisite Certificate: Basic Sea Safety Certificate.

Required Sea Service: 6 months approved sea service whilst holding a Basic Sea Safety Certificate.

Course of Study

Must have satisfactorily completed an appropriate course of study that at least meets the standards specified in the Secretariat of the Pacific Community module Courses.

Must hold the following current Certificates:

- valid certificate of medical fitness for service in the deck department;

(b) Basic Sea Safety Certificate.

Examination

Must have passed a written/practical and an oral examination in appropriate operational knowledge conducted by an approved Examiner.

DECK WATCHKEEPING RATING

Minimum Age: 16 years.

Prerequisite Certificate: Safety Certificate.

Required Sea Service:

12 months approved seagoing service, although the Marine Board may allow remission of seagoing service of 6 months for attendance at approved training programmes.

Course of Study

Must have satisfactorily completed an appropriate course of study that at least meets the standards specified in Section A-II/4 of the Code for ratings forming part of a navigational watch.

Must hold the following current Certificates:

- (a) valid certificate of medical fitness for service in the deck department;
- (b) Survival techniques Section A-VI/1-1 of the Code;
- (c) Basic First Aid at Sea. Section A-VI/1-3 of the Code;
- (d) Fire Prevention and Firefighting. Section A-VI/1-2 of the Code;
- (e) Occupational Health and Safety. Section AVI/1-4 of the Code.

Examination

Must have passed a written and an oral examination in appropriate operational knowledge conducted by an approved Examiner.

SAFETY CERTIFICATE

Minimum Age: 16 years.

Prerequisite Certificate: None.

Required Sea Service: None

Course of Study

Must have satisfactorily completed an appropriate course of study that at least meets the standards specified in Section A-VI/1 of the Code for a seafarers basic training.

Must hold the following current Certificates:

- (a) valid certificate of medical fitness for service in the deck department;
- (b) Survival techniques Section A-VI/1-1 of the Code;
- (c) Basic First Aid at Sea. Section A-VI/1-3 of the Code;
- (d) Fire Prevention and Firefighting. Section A-VI/1-2 of the Code;
- (e) Occupational Health and Safety. Section AVI/1-4 of the Code.

BOAT MASTER'S LICENCE

Minimum Age: 16 years.

Prerequisite Certificate: Basic Sea Safety Certificate.

Required Sea Service: 6 months approved sea service whilst holding a Basic Sea Safety Certificate

Course of Study

Must have satisfactorily completed an appropriate course of study that at least meets the standards specified in the Secretariat of the Pacific Community module Courses.

Must hold the following current Certificates:

- (a) valid certificate of medical fitness for service in the deck department;
- (b) Basic Sea Safety Certificate.

FISHING CERTIFICATES**MASTER CLASS 3 (F)**

Minimum Age: Not prescribed.

Prerequisite Certificate: Master Class 4 (F).

Required Sea Service

12 months approved seagoing service as a watchkeeping officer whilst holding a Certificate of Competency not lower than a Master Class 4 (F).

Not less than 6 months of seagoing service must be performed on vessels in excess of 25 metres length.

Remission of seagoing service may be allowed for attendance at approved training courses.

This service may be performed either in or out of the Near-coastal waters .

Course of Study

Must have satisfactorily completed an appropriate course of study that at least meets the standards specified in Section A-II/3 of the Code for masters on vessels engaged on Near-coastal voyages or fishing vessels operating in Near-coastal waters.

Must hold the following current Certificates:

- (a) valid certificate of medical fitness for service in the deck department;
- (b) certificate of proficiency in survival craft and rescue boats other than fast rescue boats. Section A-VI/2 of the Code;
- (c) First Aid at Sea. Section A-VI/4-1 of the Code;
- (d) Advanced Fire Fighting and Control. Section A-VI/3 of the Code;
- (e) Occupational Health and Safety. Section AVI/1-4 of the Code.

Examination

Must have passed a written, practical and an oral examination in appropriate operational knowledge conducted by an Examiner.

MASTER CLASS 4 (F)

Minimum Age: 20 years.

Prerequisite Certificate: Master Class 5 (F).

Required Sea Service:

12 months approved seagoing service as a watchkeeping officer holding a Certificate of Competency not lower than a Master Class 5 (F).

Remission of seagoing service may be allowed for attendance at approved training courses.

This service may be performed either in or out of Near-coastal waters.

Course of Study

Must have satisfactorily completed an appropriate course of study that at least meets the standards specified in Section A-II/3 of the Code for masters on vessels engaged in Near-coastal voyages or fishing vessels operating in Near Coastal waters.

Must hold the following current Certificates:

- (a) valid certificate of medical fitness for service in the deck department;
 - (b) certificate of proficiency in survival craft and rescue boats other than fast rescue boats. Section A-VI/2 of the Code;
 - (c) First Aid at Sea. Section A-VI/4-1 of the Code;
 - (d) Advanced Fire Fighting and Control. Section A-VI/3 of the Code;
- Occupational Health and Safety. Section AVI/1-4 of the Code.

Examination

Must have passed a written, practical and an oral examination in appropriate operational knowledge conducted by an Examiner.

MASTER CLASS 5 (F)

Minimum Age: 18 years.

Prerequisite Certificate: Safety Certificate.

Required Sea Service:

Either:

- (a) 30 months approved seagoing service whilst holding a Certificate of Competency not lower than a Safety Certificate;
- (b) 18 months approved seagoing service whilst holding a Certificate of Competency not lower than Master/Engineer Class 6; or

- (c) 18 months approved seagoing service whilst holding a Certificate of Competency not lower than Pacific Island Qualified Fishing Deckhand.

Remission of seagoing service may be allowed for attendance at approved training courses.

This service may be performed either in or out of the Near-coastal waters.

Course of Study

Must have satisfactorily completed an appropriate course of study that at least meets the standards specified in Section A-II/3 of the Code for officers in charge of a navigational watch on fishing vessels engaged on Near-coastal voyages.

Must hold the following current Certificates:

- (a) valid certificate of medical fitness for service in the deck department;
- (b) certificate of proficiency in survival craft and rescue boats other than fast rescue boats. Section A-VI/2 of the Code;
- (c) First Aid at Sea. Section A-VI/4-1 of the Code;
- (d) Advanced Fire Fighting and Control. Section A-VI/3 of the Code;
- (e) Occupational Health and Safety. Section AVI/1-4 of the Code.

Examination

Must have passed a written, practical and an oral examination in appropriate operational knowledge conducted by an Examiner.

MASTER/ENGINEER CLASS 6 (F)

Minimum Age: 18 years.

Prerequisite Certificate: Safety Certificate.

Required Sea Service: 12 months approved sea service.

Course of Study

Must have satisfactorily completed an appropriate course of study that at least meets the standards specified in the Secretariat of the Pacific Community module courses.

Must hold the following current Certificates:

- (a) valid certificate of medical fitness for service in the deck department.
- (b) Survival techniques. Section A-VI/1-1 of the Code;

- (c) Basic First Aid at Sea. Section A-VI/1-3 of the Code;
- (d) Fire Prevention and Firefighting. Section A-VI/1-2 of the Code;
- (e) Occupational Health and Safety. Section AVI/1-4 of the Code.

Examination

Must have passed a written, practical and an oral examination in appropriate operational knowledge conducted by an approved Examiner.

RESTRICTED MASTER/ENGINEER CLASS 6 (F)

Minimum Age: 18 years.

Prerequisite Certificate: Basic Sea Safety Certificate.

Required Sea Service: 6 months approved sea service whilst holding a Basic Sea Safety Certificate.

Course of Study

Must have satisfactorily completed an appropriate course of study that at least meets the standards specified in the Secretariat of the Pacific Community module Courses.

Must hold the following current Certificates:

- (a) valid certificate of medical fitness for service in the deck department;
- (b) Basic Sea Safety Certificate.

Examination

Must have passed a written/practical and an oral examination in appropriate operational knowledge conducted by an approved Examiner.

PACIFIC ISLAND QUALIFIED FISHING DECKHAND [PIQFD]

Minimum Age: 16 years.

Prerequisite Certificate: Safety Certificate.

Required Sea Service: 12 months approved sea service.

The Marine Board may allow remission of seagoing service of six months for attendance at an approved training programme.

Must hold the following current Certificates

- (a) valid certificate of medical fitness for service in the deck department;
- (b) Survival techniques. Section A-VI/1-1 of the Code;
- (c) Basic First Aid at Sea. Section A-VI/1-3 of the Code;
- (d) Fire Prevention and Firefighting. Section A-VI/1-2 of the Code;
- (e) Occupational Health and Safety. Section AVI/1-4 of the Code.

Examination

Must have passed a written/practical and an oral examination in appropriate operational knowledge conducted by an approved Examiner.

SAFETY CERTIFICATE

Minimum Age: 16 years.

Prerequisite Certificate: None.

Required Sea Service: None.

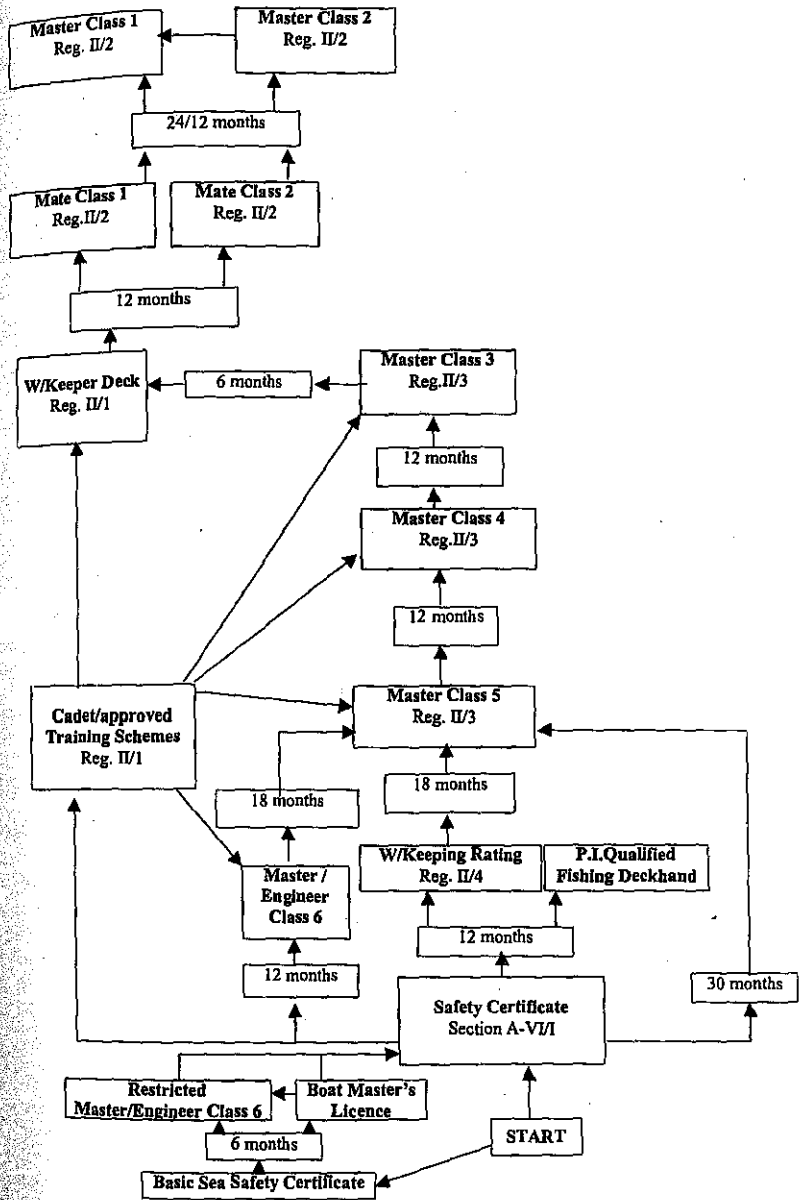
Course of Study

Must have satisfactorily completed an appropriate course of study that at least meets the standards specified in Section A-VI/1 of the Code for a seafarer's basic safety training.

Must hold the following current Certificates

- (a) valid certificate of medical fitness for service in the deck department;
- (b) Survival techniques. Section A-VI/1-1 of the Code;
- (c) Basic First Aid at Sea. Section A-VI/1-3 of the Code;
- (d) Fire Prevention and Firefighting. Section A-VI/1-2 of the Code;
- (e) Occupational Health and Safety. Section AVI/1-4 of the Code.

FLOW DIAGRAM - DECK CERTIFICATE STRUCTURE



ENGINEERING CERTIFICATES**ENGINEER CLASS 1**

Minimum Age: Not prescribed.

Prerequisite Certificate: Second Engineer Class 1 or a Engineer Class 2 and meet the requirements for certification as an Officer in Charge of an engineering watch.

Required Sea Service:

Either:

- (a) 36 months approved seagoing service of which not less than 12 months must have been served on ships powered by main engine propulsion machinery of 3,000 kW propulsion power or more as an Engineer Officer in a position of responsibility whilst holding a certificate of competency as Second Engineer Class 1.
- (b) 12 months approved seagoing service on ships powered by main engine propulsion machinery of 3,000 kW propulsion power or more as an Engineer Officer in a position of responsibility whilst holding a certificate of competency as a Engineer Class 2.

Course of Study

Must have satisfactorily completed an appropriate course of study that at least meets the standards specified in Table A-III/2 of the Code and includes management training and knowledge of the International Safety Management Code.

Hold the following current Certificates:

- (a) valid certificate of medical fitness for service in the engine department;
- (b) certificate of proficiency in survival craft and rescue boats other than fast rescue boats. Section A-VI/2 of the Code;
- (c) First Aid at Sea. Section A-VI/4-1 of the Code;
- (d) Advanced Fire Fighting and Control. Section A-VI/3 of the Code;
- (e) Occupational Health and Safety. Section AVI/1-4 of the Code.

Examination

Must have passed an oral examination in appropriate operational knowledge conducted by an approved Examiner.

SECOND ENGINEER CLASS 1

Minimum Age: Not prescribed.

Prerequisite Certificate: Engineer Watchkeeper.

Required Sea Service: Must have completed at least 12 months approved seagoing service on ships powered by main engine propulsion machinery between 750 kW to 3,000 kW propulsion power as Assistant Engineer Officer or Engineer Officer whilst holding a certificate of competency as Engineer Watchkeeper.

Course of Study

Must have satisfactorily completed an appropriate course of study that at least meets the standards specified in Table A-III/2 of the Code and includes management training and knowledge of the International Safety Management Code.

Must hold the following current Certificates:

- (a) valid certificate of medical fitness for service in the engine department;
- (b) certificate of proficiency in survival craft and rescue boats other than fast rescue boats. Section A-VI/2 of the Code;
- (c) First Aid at Sea. Section A-VI/4-1 of the Code;
- (d) Advanced Fire Fighting and Control. Section A-VI/3 of the Code;
- (e) Occupational Health and Safety. Section A-VI/4 of the Code.

Examination

Must have passed a written, practical and an oral examination in appropriate operational knowledge conducted by an approved Examiner.

ENGINEER CLASS 2

Minimum Age: Not prescribed.

Prerequisite Certificate: Second Engineer Class 2, and meet the requirements for certification as an Officer in Charge of an engineering watch.

Required Sea Service: Must have completed at least 24 months approved seagoing service of which not less than 12 months must have been served on ships powered by main engine propulsion machinery between 750kW to 3,000 kW propulsion power whilst holding a certificate of competency as Second Engineer Class 2.

Every engineer who is qualified to serve as a second engineer on ships powered by main engine propulsion machinery of 3,000 kW propulsion power or more, may serve as chief engineer on ships powered by main engine propulsion machinery of less than 3,000 kW propulsion power, provided that not less than 12 months' approved seagoing service has been served as an Engineer Officer in a position of responsibility and the certificate is so endorsed

Course of Study

Must have satisfactorily completed an appropriate course of study that at least meets the standards specified in Table A-III/3 of the Code and includes management training and knowledge of the International Safety Management Code.

Hold the following current Certificates:

- (a) valid certificate of medical fitness for service in the engine department;
- (b) certificate of proficiency in survival craft and rescue boats other than fast rescue boats. Section A-VI/2 of the Code;
- (c) First Aid at Sea. Section A-VI/4-1 of the Code;
- (d) Advanced Fire Fighting and Control. Section A-VI/3 of the Code;
- (e) Occupational Health and Safety. Section AVI/1-4 of the Code.

Examination

Must have passed an oral examination in appropriate operational knowledge conducted by an approved Examiner.

SECOND ENGINEER CLASS 2

Minimum Age: Not prescribed.

Prerequisite Certificate: Engineering Watchkeeper .

Required Sea Service: Must have completed at least 12 months' approved seagoing service on ships powered by main engine propulsion machinery of between 750 kW to 3,000 kW propulsion power whilst holding a certificate of competency as Engineering Watchkeeper.

Course of Study

Must have satisfactorily completed an appropriate course of study that at least meets the standards specified in Table A-III/3 of the Code and includes management training and knowledge of the International Safety Management Code.

Hold the following current Certificates:

- (a) valid certificate of medical fitness for service in the engine department;
- (b) certificate of proficiency in survival craft and rescue boats other than fast rescue boats. Section A-VI/2 of the Code;
- (c) First Aid at Sea. Section A-VI/4-1 of the Code;
- (d) Advanced Fire Fighting and Control. Section A-VI/3 of the Code;

- (e) Occupational Health and Safety. Section AVI/1-4 of the Code.

Examination

Must have passed a written, practical and an oral examination in appropriate operational knowledge conducted by an approved Examiner.

ENGINEER WATCHKEEPER

(Note: a Engineer Class 3 may gain cross credit to a Engineer Watchkeeper).

Minimum Age: 18 years.

Prerequisite Certificate: Not prescribed

Required Sea Service:

Must have:

- (a) have completed not less than 6 months seagoing service in the engine department in accordance with section A-III/1 of the Code; and
- (b) completed approved education and training of at least 30 months, which includes on-board training documented in an approved training record book and meet the standards of competence specified in Section A-III/1 of the Code.

Course of Study

Must have satisfactorily completed an appropriate course of study that at least meets the standards specified in Table A-III/1 of the Code.

Must hold the following current Certificates:

- (a) valid certificate of medical fitness for service in the engine department;
- (b) certificate of proficiency in survival craft and rescue boats other than fast rescue boats. Section A-VI/2 of the Code;
- (c) First Aid at Sea. Section A-VI/4-1 of the Code;
- (d) Advanced Fire Fighting and Control. Section A-VI/3 of the Code;
- (e) Occupational Health and Safety. Section AVI/1-4 of the Code.

Examination

Must have passed a written, practical and an oral examination in appropriate operational knowledge conducted by an approved Examiner.

ENGINEER CLASS 3

Note: an Engineer Class 3 may gain cross-credit to Engineer Watchkeeper but must have completed at least 6 months' approved seagoing service on ships powered by main engine propulsion machinery of above 750 kW propulsion power

Minimum Age: 18 years.

Prerequisite Certificate: Engineer Class 4.

Required Sea Service:

Either:

- (a) Not less than 12 months approved seagoing service as an Engineer Watchkeeper whilst holding a Certificate of Competency as a Engineer Class 4 or;
- (b) Have completed approved education and training of at least 36 months which includes 6 months onboard training (on vessels more than 500 kW propulsion power machinery) which include on-board training documented in an approved training record book.

Course of Study

Must have satisfactorily completed an appropriate course of study that at least meets the standards specified in the Secretariat of the Pacific Community Course modules and South Pacific Maritime Code.

Must hold the following current Certificates:

- (a) valid certificate of medical fitness for service in the engine department;
- (b) certificate of proficiency in survival craft and rescue boats other than fast rescue boats. Section A-VI/2 of the Code;
- (c) First Aid at Sea. Section A-VI/4-1 of the Code;
- (d) Advanced Fire Fighting and Control. Section A-VI/3 of the Code;
- (e) Occupational Health and Safety. Section AVI/1-4 of the Code.

Examination

Must have passed a written, practical and an oral examination in appropriate operational knowledge conducted by an approved Examiner.

ENGINEER CLASS 4

Minimum Age: 18 years.

Prerequisite Certificate: Safety Certificate.

Required Sea Service:

Either:

- (a) Not less than 12 months approved service as a watchkeeping engineer whilst holding a Certificate of Competency as a Engineer Class 5;
- (b) Not less than 12 months at sea as a watchkeeping engineer on completion of 3 years workshop service acceptable to the Marine Board; or
- (c) Have completed approved education and training of at least 36 months which includes 6 months onboard training (on vessels more than 250 kW propulsion power machinery) which include on-board training documented in an approved training record book.

Course of Study

Must have satisfactorily completed an appropriate course of study that at least meets the standards specified in the Secretariat of the Pacific Community Course modules and South Pacific Maritime Code.

Hold the following current Certificates:

- (a) valid certificate of medical fitness for service in the engine department;
certificate of proficiency in survival craft and rescue boats other than fast rescue boats. Section A-VI/2 of the Code;
- (c) First Aid at Sea. Section A-VI/4-1 of the Code;
- (d) Advanced Fire Fighting and Control. Section A-VI/3 of the Code;
- (e) Occupational Health and Safety. Section AVI/1-4 of the Code.

Examination

Must have passed a written, practical and an oral examination in appropriate operational knowledge conducted by an approved Examiner.

ENGINEER CLASS 5

Minimum Age: 18 years.

Prerequisite Certificate: Safety Certificate

Required Sea Service:

Either

- (a) not less than a 3 years programme of training approved by the Marine Board, including not less than one year at sea in work associated with engine operation;
- (b) not less than 12 months at sea as engineer on completion of 3 years workshop service acceptable to the Marine Board;
- (c) have completed approved education and training of at least 24 months which includes 6 months onboard training (on vessels more than 250 kW propulsion power machinery) which include on-board training documented in an approved training record book;
- (d) not less than 12 months approved seagoing service whilst holding a Certificate of Competency as Master/Engineer Class 6/Eng. and completed not less than one year of approved workshop training; or
- (e) Not less than 12 months approved seagoing service whilst holding a Certificate of Competency as Watchkeeping Rating and completed not less than one year of approved workshop training.

Course of Study

Must have satisfactorily completed an appropriate course of study that at least meets the standards specified in the Secretariat of the Pacific Community Course modules and South Pacific Maritime Code.

Must hold the following current Certificates:

- (a) valid certificate of medical fitness for service in the engine department;
- (b) certificate of proficiency in survival craft and rescue boats other than fast rescue boats. Section A-VI/2 of the Code;
- (c) First Aid at Sea. Section A-VI/4-1 of the Code;
- (d) Fire Prevention and Control. Section A-VI/2 of the Code;
- (e) Occupational Health and Safety. Section AVI/1-4 of the Code.

Examination

Must have passed a written, practical and an oral examination in appropriate operational knowledge conducted by an approved Examiner.

MASTER/ENGINEER CLASS 6

Minimum Age: 18 years.

Prerequisite Certificate: Safety Certificate.

Required Sea Service: Not less than 12 months approved seagoing service whilst holding a Safety Certificate.

Course of Study

Must have satisfactorily completed an appropriate course of study that at least meets the standards specified in the Secretariat of the Pacific Community Course modules.

Must hold the following current Certificates:

- (a) valid certificate of medical fitness for service in the deck or engine department;
- (b) Survival techniques Section A-VI/1-1 of the Code;
- (c) First Aid at Sea. Section A-VI/1-4 of the Code;
- (d) Fire Prevention and Control. Section A-VI/1-2 of the Code;
- (e) Occupational Health and Safety. Section AVI/1-4 of the Code.

Examination

Must have passed a written, practical and an oral examination in appropriate operational knowledge conducted by an approved Examiner.

RESTRICTED MASTER/ENGINEER CLASS 6

Minimum Age: 18 years.

Prerequisite Certificate: Basic Sea Safety Certificate.

Required Sea Service: 6 months approved sea service whilst holding a Basic Sea Safety Certificate.

Course of Study

Must have satisfactorily completed an appropriate course of study that at least meets the standards specified in the Secretariat of the Pacific Community Course modules.

Must hold the following current Certificates:

- (a) valid certificate of medical fitness for service in the deck department;
- (b) Basic Sea Safety Certificate.

Examination

Must have passed a written/practical and an oral examination in appropriate operational

knowledge conducted by an approved Examiner.

ENGINE WATCHKEEPING RATING

Minimum Age: 16 years.

Prerequisite Certificate: Safety Certificate.

Required Sea Service: 12 months approved seagoing service.

Remission of seagoing service of six months may be allowed by the Marine Board for attendance at approved training programmes.

Course of Study

Must have satisfactorily completed an appropriate course of study that at least meets the standards specified in Section A-III/4 of the Code for ratings forming part of a navigational watch.

Must hold the following current Certificates:

- (a) valid certificate of medical fitness for service in the engine department;
- (b) Survival techniques Section A-VI/1-1 of the Code;
- (c) Basic First Aid at Sea. Section A-VI/1-3 of the Code;
- (d) Fire Prevention and Firefighting. Section A-VI/1-2 of the Code;
- (e) Occupational Health and Safety. Section AVI/1-4 of the Code.

Examination

Must have passed a written/practical and an oral examination in appropriate operational knowledge conducted by an Examiner.

SAFETY CERTIFICATE

Minimum Age: 16 years.

Prerequisite Certificate: None.

Required Sea Service: None.

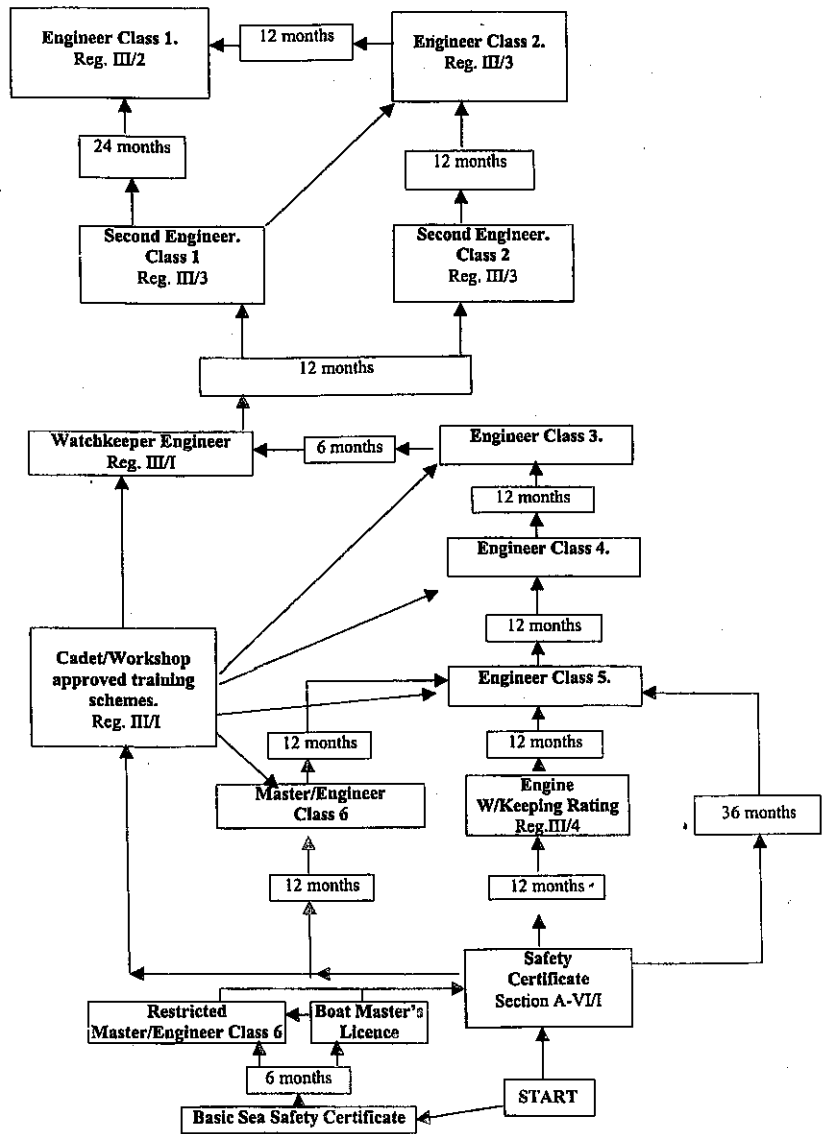
Course of Study

Must have satisfactorily completed an appropriate course of study that at least meets the standards specified in Section A-VI/1 of the Code for a seafarers basic safety training.

Must hold the following current Certificates

- (a) valid certificate of medical fitness for service in the engine department;
- (b) Survival techniques - Section A-VI/1-1 of the Code;
- (c) Basic First Aid at Sea. Section A-VI/1-3 of the Code;
- (d) Fire Prevention and Firefighting. Section A-VI/1-2 of the Code;
- (e) Occupational Health and Safety. Section AVI/1-4 of the Code.

FLOW DIAGRAM - ENGINEERING CERTIFICATE STRUCTURE



SPECIAL TRAINING REQUIREMENTS CERTIFICATES**BASIC SAFETY TRAINING (SAFETY CERTIFICATE)**

Minimum Age: 16 years.

Prerequisite Certificate: None.

Required Sea Service: None.

Course of Study: Safety Certificate.

All Seafarers must receive familiarisation and basic safety training or instruction in accordance with Section A-VI/1 of the Code and must meet the appropriate standard of competence specified therein.

PROFICIENCY IN SURVIVAL CRAFT AND RESCUE BOATS OTHER THAN FAST RESCUE BOATS

Minimum Age: Not prescribed.

Prerequisite Certificate: None.

Required Sea Service: Approved seagoing service of not less than 12 months or have completed an approved training course and have an approved seagoing service of not less than 6 months; and must provide evidence of having achieved the required standard of competence defined in section A-VI/2 of the Code.

MEDICAL FIRST-AID (FIRST AID AT SEA)

Minimum Age: Not prescribed.

Prerequisite Certificate: None.

Required Sea Service: None.

Every person designated to provide medical first aid on board a vessel must provide evidence of having achieved the required standards of competence in medical first aid on board vessels specified in Section A-VI/4, paragraphs 1-3 of the Code.

MEDICAL CARE (SHIPMASTER'S MEDICAL)

Minimum Age: Not prescribed.

Prerequisite Certificate: Medical First Aid.

Required Sea Service: None.

Seafarers designated to take charge of medical care on board ship must meet the standard of competence in medical care on board ships specified in Section A-VI/4, paragraphs 4-6 of the Code.

ADVANCED FIRE FIGHTING

Minimum Age: Not prescribed.

Prerequisite Certificate: None.

Required Sea Service: None.

Every candidate for certification must provide evidence of having achieved the required standard of competence defined in section A-VI/3 of the Code

TANKER FAMILIARISATION

Minimum Age: Not prescribed.

Prerequisite Certificate: None.

Required Sea Service:

At least 3 months of approved seagoing service on tankers in order to acquire adequate knowledge of safe operational practices; or an approved tanker familiarisation course covering at least the syllabus given for that course in Section A-V/1 of the Code, so however that, the Marine Board may accept a period of supervised seagoing service shorter than that prescribed above, provided:

- (a) the period so accepted is not less than 1 month;
- (b) the tanker is of less than 3000 gross tonnage;
- (c) the duration of each voyage on which the tanker is engaged during the period does not exceed 72 hours; and
- (d) the operational characteristics of the tanker and the number of voyages and loading and discharging operations completed during the period, allow the same level of knowledge and experience to be acquired.

ADVANCED TANKER SAFETY

Minimum Age: Not prescribed.

Prerequisite Certificate: Tanker Familiarisation.

Required Sea Service: Must have:

- (a) experience appropriate to their duties on the type of tanker on which they serve; and
- (b) completed an approved specialised training programme which at least covers the subjects set out in Section A-V/1 of the Code that are appropriate to their duties on the oil tanker on which they serve.

RO-RO PASSENGER VESSELS

Minimum Age: Not prescribed.

Prerequisite Certificate: None.

Required Sea Service: None.

Masters, officers, ratings and other persons serving on board ro-ro passenger vessels must provide evidence of having achieved the required standards of competence defined in Section A-V/2 of the Code.

RESTRICTED OPERATORS CERTIFICATE (ROC)

Minimum Age: 18.

Prerequisite Certificate: None.

Required Sea Service: None.

Radio personnel on ships not required to comply with the provisions of the GMDSS in Chapter 14 of the SOLAS Convention must comply with the provisions of the Radio Regulations. Appropriate certificates prescribed by the Radio Regulations must be issued or recognised in respect of such radio personnel.

GENERAL OPERATORS CERTIFICATE (GMDSS) - GOC

Minimum Age: 18.

Prerequisite Certificate: None.

Required Sea Service: None.

Must have completed approved education and training and meet the standard of competence specified in Section A-IV/2 of the Code.

Part II - COURSE STRUCTURE**DECK DEPARTMENT**

Master & Chief Mate Class 1
Master & Chief Mate Class 2
Deck Watchkeeper (STCW 95)
Master Class 3
Master Class 4
Master Class 5
Master/Engineer Class 6
Restricted Master/Engineer Class 6
Deck Watchkeeping Rating
Pacific Islands Qualified Fishing Deck Hand

ENGINE DEPARTMENT

Chief & Second Engineer Class 1
Chief & Second Engineer Class 2
Engineer Watchkeeper (STCW 95)
Engineer Class 3
Engineer Class 4
Engineer Class 5
Master/Engineer Class 6
Restricted Master/Engineer Class 6
Engine Watchkeeping Rating

SPECIAL TRAINING COURSES

Basic Sea Safety Certificate (Non-STCW)
Safety Certificate (Basic Safety Training - STCW 95)
Tanker (Petroleum / Chemical / Gas)
Ro-Ro Passenger Vessels

DECK DEPARTMENT**DECK WATCHKEEPER (STCW 95)***Prerequisite Certificate : Not prescribed*

Code	Module	Nominal Duration in hours
SPC 101	Electronic Navigation Aids	90
SPC 102	Electronic Navigation – Radar (Part of SPC 101)	
SPC 103	Electronic Navigation – ARPA (Part of SPC 101)	
SPC 104	Offshore and Celestial navigation	70
SPC 105	Visual Communications (Deck Watchkeeper)	10
SPC 106	Enabling Maths and Physics	35
SPC 107	Enabling Computers (Deck Watchkeeper)	21

(Plus prerequisite special training courses)**MASTER CLASS 3***Prerequisite Certificate : Master Class 4*

Code	Module	Nominal Duration in hours
SPC 081	Vessel Construction & Machinery (Master 3)	35
SPC 082	Vessel Stability & Stress	35
SPC 083	Bridge Operations	35
SPC 084	Nautical Knowledge (Master 3)	35
SPC 085	Cargo Operations (Master 3)	35
SPC 086	Vessel Administration	30
SPC037	ARPA (optional)	21

(Plus prerequisite special training courses)

MASTER CLASS 4***Prerequisite Certificate : Master Class 5***

Code	Module	Nominal Duration in hours
SPC 061	Vessel Construction & Machinery (Master 4)	35
SPC 062	Small Vessel Stability	35
SPC 063	Navigation & Position Determination (Master 4)	35
SPC 064	Instrumentation & Navigational Aids	35
SPC 065	Radar (Master 4)	35
SPC 066	Nautical Knowledge (Master 4)	50
SPC 067	Visual Communications	7
SPC 068	Cargo Operations (Master 4)	21
SPC037	ARPA (optional)	21

(Plus prerequisite special training courses)

MASTER CLASS 5***Prerequisite Certificate : Safety Certificate***

Code	Module	Nominal Duration in hours
SPC 041	Vessel Construction & Machinery	35
SPC 042	Navigation & Position Determination (Master 5)	60
SPC 043	Nautical Knowledge (Master 5)	60
SPC 044	Small Vessel Stability (Master 5)	35
SPC 034	Basic Radar	35
SPC 035	Advanced Fire Prevention & Control	35
SPC 036	GMDSS	40
SPC037	ARPA (optional)	21
SPC 015	Proficiency in survival craft and rescue boats other than fast rescue boats	35

SPC 016 First Aid at Sea 21

(Plus prerequisite special training courses)

MASTER/ENGINEER CLASS 6

Prerequisite Certificate : Safety Certificate

Code	Module	Nominal Duration in hours
SPC 021	Nautical Knowledge (Master 6)	60
SPC 022	Engineering Knowledge (Engineer 6)	60
SPC 023	Basic Radar Operation (Optional)	21
SPC 024	Radiotelephony	21

RESTRICTED MASTER/ENGINEER CLASS 6

Prerequisite Certificate : Basic Sea Safety Certificate

Code	Module	Nominal Duration in hours
	Basic Sea Safety	21
SPC 021B	Nautical Knowledge (Restricted Class 6)	60
SPC 022C	Outboard Motors (Restricted Class 6)	10
SPC 022D	Diesel Engineering (Restricted Class 6)	30

BOAT MASTER'S LICENCE

Prerequisite Certificate : Basic Sea Safety Certificate

Code	Module	Nominal Duration in hours
	Basic Sea Safety	20
	Nautical Knowledge (Boat Master)	10
	Outboard Motors (Boat Master)	4
	Diesel Engineering (Boat Master) – (Optional)	6

DECK WATCHKEEPING RATING*Prerequisite Certificate : Safety Certificate*

Code	Module	Nominal Duration in hours
SPC 011	Basic Bridge Procedures	50
SPC 012	Basic Seamanship	35
SPC 014	Enabling English	7
SPC 015	Proficiency in survival craft and rescue boats other than fast rescue boats	35
SPC 016	First Aid at Sea	21

(Plus prerequisite special training courses)**PACIFIC ISLANDS QUALIFIED FISHING DECKHAND***Prerequisite Certificate : Safety Certificate*

Code	Module	Nominal Duration in hours
SPC 011	Basic Bridge Procedures	50
SPC 012	Basic Seamanship	35
SPC 014	Enabling English	7
SPC 015	Proficiency in survival craft and rescue boats other than fast rescue boats	35
SPC 016	First Aid at Sea	21
SPC 012 F	Basic Fishing	30

(Plus prerequisite special training courses)**ENGINE DEPARTMENT****ENGINEER WATCHKEEPER (STCW 95)***Prerequisite Certificate : Not prescribed*

Code	Module	Nominal Duration in hours
SPC 111	Electronics	35
SPC 112	Marine Control	35

SPC 113	General Engineering Knowledge	50
SPC 114	Motor Engineering Knowledge	50
SPC 115	Steam Engineering Knowledge	40

(Plus prerequisite special training courses)

ENGINEER CLASS 3

Prerequisite Certificate : Engineer Class 4

Code	Module	Nominal Duration in hours
SPC 091	Applied Mechanics (Engineer 3)	35
SPC 092	Heat and Heat Engines (Engineer 3)	35
SPC 093	Engineering Drawings (Engineer 3)	35
SPC 094	Electro Technology (Engineer 3)	35
SPC 095	Naval Architecture and Ship Construction (Engineer 3)	35
SPC 096	Engineering Knowledge - General (Engineer 3)	35
SPC 097	Engineering Knowledge - Motor (Engineer 3)	35
SPC 086	Administration	35

(Plus prerequisite special training courses)

ENGINEER CLASS 4

Prerequisite Certificate : Engineer Class 5

Code	Module	Nominal Duration in hours
SPC 071	Applied Mechanics (Engineer 4)	35
SPC 072	Heat and Heat Engines (Engineer 4)	35
SPC 073	Engineering Drawings (Engineer 4)	35
SPC 074	Electro Technology (Engineer 4)	35
SPC 075	Naval Architecture and Ship Construction (Engineer 4)	35
SPC 076	Engineering Knowledge - General (Engineer 4)	60

SPC 077	Engineering Knowledge - Motor (Engineer 4)	60
SPC 035	Advanced Fire Prevention & Control	35

(Plus prerequisite special training courses)

ENGINEER CLASS 5

Prerequisite Certificate : Master/Engineer Class 6 or Engine Watchkeeping Rating

Code	Module	Nominal Duration in hours
SPC 051	Practical Mathematics	35
SPC 052	Engineering Knowledge (Engineer 5)	60
SPC 015	Proficiency in survival craft and rescue boats other than fast rescue boats	35
SPC 016	First Aid at Sea	21

(Plus prerequisite special training courses)

MASTER/ENGINEER CLASS 6

Prerequisite Certificate : Safety Certificate

Code	Module	Nominal Duration in hours
SPC 021	Nautical Knowledge (Master 6)	60
SPC 022	Engineering Knowledge (Engineer 6)	60
SPC 023	Basic Radar Operation	21
SPC 024	Radiotelephony	21

RESTRICTED MASTER/ENGINEER CLASS 6

Prerequisite Certificate : Basic Sea Safety Certificate

Code	Module	Nominal Duration in hours
-	Basic Sea Safety	21
SPC 021B	Nautical Knowledge (Restricted Class 6)	60
SPC 022C	Outboard Motors (Restricted Class 6)	10

SPC 022D Diesel Engineering (Restricted Class 6) 30

ENGINE WATCHKEEPING RATING

Prerequisite Certificate : Safety Certificate

Code	Module	Nominal Duration in hours
SPC 013	Basic Marine Machinery Systems	50
SPC 012	Basic Seamanship	35
SPC 014	Enabling English	7
SPC 015	Proficiency in survival craft and rescue boats other than fast rescue boats	35
SPC 016	First Aid at Sea	21

(Plus prerequisite special training courses)

SAFETY CERTIFICATE

Prerequisite Certificate : Nil

Code	Module	Nominal Duration in hours
C 001	Survival Techniques	15
SPC 002	Fire Prevention and Control	18
SPC 003	Elementary First Aid	15
SPC 004	Occupational Health & Safety	20

BOAT MASTER'S LICENCE

Prerequisite Certificate: Basic Sea Safety Certificate

Code	Module	Nominal Duration in hours
-	Basic Sea Safety	20
-	Nautical Knowledge (Boat Master)	10
-	Outboard Motors (Boat Master)	4
-	Diesel Engineering (Boat Master) – (Optional)	6

PREREQUISITE SPECIAL TRAINING REQUIREMENT COURSES*Prerequisite Certificate : Nil*

Code	Module	Nominal Duration in hours
SPC 005	Basic Tanker Safety Training (not yet available)	21

Prerequisite Certificate: Nil

Code	Module	Nominal Duration in hours
SPC 006	Ro-Ro passenger vessels (not yet available)	28

Prerequisite Certificate: Nil

Code	Module	Nominal Duration in hours
SPC 012F	Basic Fishing	30

SCHEDULE VI
(Regulation 20(1))

Part I - CERTIFICATES RECOGNISED IN FIJI

The Marine Board may issue, recognise and endorse the following classes of certificates of competency:

NAVIGATION

Unlimited

Master Class 1	> 3000 gross tons
Mate Class 1	> 3000 gross tons
Master Class 2	< 3000 gross tons
Mate Class 2	< 3000 gross tons
Officer in Charge of a Navigational Watch	> 500 gross tons
Deck Watchkeeping Rating	> 500 gross tons
Master Class 3 Endorsed	< 500 gross tons

Near-coastal

Master Class 1	> 3000 gross tons
Mate Class 1	> 3000 gross tons
Master Class 2	3000 to > 1600 gross tons
Mate Class 2	3000 to > 1600 gross tons
Officer in Charge of a Navigational Watch	> 500 gross tons
Master Class 3	1600 to > 500 gross tons
Master Class 4	500 to > 80 gross tons
Master Class 5 Endorsed	80 gross tons and under
Deck Watchkeeping Rating	> 500 gross tons

Territorial waters

Master Class 1	> 3000 gross tons
Mate Class 1	> 3000 gross tons
Master Class 2	3000 to > 1600 gross tons
Mate Class 2	3000 to > 1600 gross tons
Officer in Charge of a Navigational Watch	> 500 gross tons
Master Class 3	1600 to > 500 gross tons
Master Class 4	500 to > 80 gross tons
Master Class 5	80 to > 20 gross tons
Master/Engineer Class 6-Engineer	20 gross tons (15 metres) or less
Deck Watchkeeping Rating	> 500 gross tons

Inshore

Master Class 1	> 7000 gross tons
Master Class 2	< 7000 to > 3000 gross tons
Officer in Charge of a Navigational Watch	> 500 gross tons
Master Class 3	3000 to > 1600 gross tons
Master Class 4	1600 to > 500 gross tons
Master Class 5	500 to > 20 gross tons
Restricted Master/Engineer Class 6-Engineer	20 gross tons (15 metres) or less

Deck Watchkeeping Rating > 500 gross tons

Sheltered Waters
Boat Master's Licence 20 gross tons (15 metres) or less

ENGINEERING

Unlimited

Engineer Class 1 > 3000kW
Second Engineer Class 1 > 3000kW
Engineer Class 2 3000 to >750 kW
Second Engineer Class 2 3000 to >750 kW
Officer in Charge of an engineering watch > 750 kW
Engine Watchkeeping Rating > 750 kW
Engineer Class 3 *(Endorsed) < 750 kW

Near-coastal

Engineer Class 1 > 6000 kW
Engineer Class 2 6000 to > 3000 kW
Engineer Class 3* Endorsed 3000 to > 1500 kW
Officer in Charge of an engineering watch > 750 kW
Engineer Class 3 1500 - >750 kW
Engineer Class 4 750 - >500 kW
Engineer Class 5 500 kW or less
Engine Watchkeeping Rating > 750 kW

Territorial waters

Engineer Class 1 > 6000 kW
Engineer Class 2 6000 to > 3000 kW
Engineer Class 3 3000 to > 1500 kW
Officer in Charge of an engineering watch > 750 kW
Engineer Class 4 < 750 - >250 kW
Engineer Class 5 250 kW or less
Master/Engineer Class 6 20 gross tons (15 metres) or less
Engine Watchkeeping Rating > 750 kW

Inshore

Engineer Class 1 > 6000 kW
Engineer Class 2 6000 to > 3000 kW
Engineer Class 3 3000 to > 1500 kW
Officer in Charge of an engineering watch > 750 kW
Engineer Class 4 1500 - >500 kW
Engineer Class 5 500 - > 250 kW
Master/Engineer Class 6 250 kW or less
Restricted Master/Engineer Class 6 20 gross tons (15 metres) or less
Engine Watchkeeping Rating > 750 kW

Part II – MANDATORY SHORT COURSES

The FIT/School of Maritime Studies and Fiji National Training Council may issue the following short course certificates:

	Short Courses	STCW Code
a)	Basic Safety - Survival Techniques Certificate	A-VI/1-1
b)	Basic Safety - Occupational Health and Safety Certificate	A-VI/1-4
c)	Basic Sea Safety	

The FIT/School of Maritime Studies in conjunction with the St John Ambulance Brigade and Fiji Red Cross Society may issue the following short course certificates:

a)	Basic Safety - Elementary First Aid Certificate	A-VI/1-3
b)	Proficiency in Medical First Aid Certificate	A-VI/4-1

The FIT/School of Maritime Studies in conjunction with the National Fire Authority may issue the following short course certificates:

a)	Basic Safety - Fire Prevention and Fire fighting Certificate	A-VI/1-2
b)	Advanced Fire Prevention and Control Certificate	A-VI/3

The FIT/School of Maritime Studies in conjunction with Fiji Navy may issue the following short course certificates:

a)	Basic Safety - Fire Prevention and Fire fighting Certificate	A-VI/1-2
b)	Basic Safety - Survival Techniques Certificate	A-VI/1-1
c)	Advanced Fire Prevention and Control Certificate	A-VI/3

The FIT/School of Maritime Studies and Fiji Navy may issue the following short course certificate:

a)	Proficiency in Survival Craft and Rescue Boats other than Fast Rescue Boats	A-VI/2-1
----	-----------------------------------------------------------------------------	----------

The Department of Telecommunications may issue the following short course certificates:

a)	General Operator's Certificate (GMDSS -GOC)	A-IV/2
b)	Restricted Operator's Certificate (ROC)	A-IV/2

The FIT/School of Maritime Studies in conjunction with Fiji School of Medicine may issue the following certificate:

	Medical care on board ship	A-VI/4-2
--	----------------------------	----------

Part III – SPECIAL TRAINING REQUIREMENT COURSES

The FIT/School of Maritime Studies in conjunction with an approved Training Provider may issue the following short course certificates:

- a) Crowd Management [Ro-Ro & Passenger Ships]
- b) Crisis Management [Ro-Ro & Passenger Ships]
- c) Oil Tanker Safety Course
- d) Liquefied Gas Tanker Safety Course

SCHEDULE VII
(Regulation 27,34)

PRESCRIBED FEES

Item	\$ (VIP)
1. Application for the issue of a certificate, including the verification of sea-time	\$33
2. Conduct of an assessment of competency or examination conducted by or on behalf of the Administration:	
Master Class 1 or Engineer Class 1	\$110
Mate Class 1 or Second Engineer Class 1	\$99
Master Class 2 or Engineer Class 2	\$88
Mate Class 2 or Second Engineer Class 2	\$77
Master Class 3 or Deck Watchkeeper	\$66
Engineer Class 3 or Engineer Watchkeeper	\$66
Master Class 4 or Engineer Class 4	\$55
Master Class 5 or Engineer Class 5	\$44
Master/Engineer Class 6 [Full & Restricted]	\$33
Deck Watchkeeping Rating or Engine Watchkeeping Rating	\$22
Pacific Island Qualified Fishing Deckhand	\$22
Boat Master's Licence	\$22
Additional Certified Transcript of examination results	\$11
4. Re-assessment of an unsuccessful candidate	\$11 per module
5. Issuance of a new Certificate of Competency.	
Master Class 1 or Engineer Class 1	\$44
Mate Class 1 or Second Engineer Class 1	\$44
Master Class 2 or Engineer Class 2	\$33
Mate Class 2 or Second Engineer Class 2	\$33
Master Class 3 or Deck Watchkeeper	\$22
Engineer Class 3 or Engineer Watchkeeper	\$22
Master Class 4 or Engineer Class 4	\$22
Master Class 5 or Engineer Class 5	\$22
Master/Engineer Class 6 [Full & Restricted]	\$11
Deck Watchkeeping Rating or Engine Watchkeeping Rating	\$11
Pacific Island Qualified Fishing Deckhand	\$11
Safety Certificate	\$11
Boat Master's Licence	\$11

6.	Revalidation of a Certificate of Competency.		
	Master Class 1	or	Engineer Class 1
	Mate Class 1	or	Second Engineer Class 1
	Master Class 2	or	Engineer Class 2
	Mate Class 2	or	Second Engineer Class 2
	Master Class 3	or	Deck Watchkeeper
	Engineer Class 3	or	Engineer Watchkeeper
	Master Class 4	or	Engineer Class 4
	Master Class 5	or	Engineer Class 5
	Master/Engineer Class 6 [Full & Restricted]		
	Deck Watchkeeping Rating	or	Engine Watchkeeping Rating
	Pacific Island Qualified Fishing Deckhand		
	Boat Master's Licence		
			\$44
			\$44
			\$33
			\$33
			\$22
			\$22
			\$22
			\$22
			\$11
			\$11
			\$11
			\$11
7.	Replacement of a lost certificate		\$55
8.	Application Fee for Dispensation from Manning Requirements		\$55
9.	Certificate of Competency Endorsement fee		\$11
10.	Endorsement attesting the Recognition of a Certificate of Competency		\$110
	Endorsement attesting the issue of a Certificate of Competency		\$110
11.	Issuance of a Safe Manning Certificate		\$55
12.	Course Syllabus		\$5.50
13.	Onboard Training Record Book		\$11
14.	Application for a review by a Medical Board		\$25
15.	Registration of a Seaman - (Seaman's Employment Record Book)		\$33
16.	Replacement of a lost Seaman's Employment Record Book		\$55

SCHEDULE VIII
(Regulation 37)

PART 1 - MEDICAL STANDARDS

1. A physician conducting a medical examination under Part VII must ensure that the seafarer does not suffer from-
 - (i) an impairment that causes unpredictable loss of consciousness and that cannot be controlled through medication;
 - (ii) a disorder that could prevent the seafarer from reacting efficiently, while on watch, or in an emergency;
 - (iii) a condition that is likely to require emergency medical care and that cannot be controlled through medication;
 - (iv) high blood pressure, or high risk of stroke or heart attack;
 - (v) a condition that could endanger others, taking into account the confined living conditions on board ship, such as
 - (a) AIDS or other sexually transmitted disease;
 - (b) a communicable disease that could affect other seafarers coming into close contact;
 - (vi) alcohol or drug addiction that could impair the seafarers ability to carry out his or her duties as and when required;
 - (vii) an active psychiatric disorder.
 - (viii) The doctor should order a blood test if he suspects the seafarer has been in contact with a HIV positive person.

2. The physician must ensure that the seafarer has -
 - (i) adequate muscle strength to carry a mass of 22 kg;
 - (ii) the physical capacity to wear breathing apparatus and life saving equipment;
 - (iii) adequate vision and hearing and the agility and strength to perform the duties of fire fighting, first-aid administration and ship abandonment in an emergency.

3. The physician must ensure that a seafarer who performs the following duties meets the physical requirements set out in "Seagoing Occupations" of the *Physician's Guide to STCW-95* -
 - (i) the duties of deck department personnel set out in clause 1.2;
 - (ii) the duties of engineers set out in clause 1.3;
 - (iii) the duties of cooks or stewards set out in clause 1.4.

4. A medical examination conducted under Part VII must conform to the guidelines and time-period requirements of the following clauses of Physicians Guide.

5. Colour vision standards are those set out in Sections 3.1 and 3.2 or the *Physician's Guide*.

6. Subject to the provisions contained in the *Physicians Guide*, every seafarer before going to sea must:
 - (a) be in good health with normal blood pressure, or be on maintenance medication to maintain the blood pressure not to exceed 160/100;
 - (b) have vision of 20/20 or equivalent international vision criteria, correctable to 20/40 for deck applicants and 20/50 for engineer applicants;
 - (c) have an unaided average threshold of hearing of 70 dB or less in each ear for deck applicants, or functional speech discrimination of at least 80% at 55 dB binaural, and 40 dB or less for engineer applicants, or functional speech discrimination of at least 90% at 55 dB binaural.

7. Deck applicants may have aided average of 40db or less or functional speech discrimination of 90% at 55 dB binaural. Waivers may be granted in exceptional conditions for applicants who do not meet these criteria.

PART 2 - TABLE B-1/9

Minimum in-service eyesight standards

STCW Regulation	Category of seafarer	Distance vision*		Near/immediate vision	Colour vision	Visual fields	Night blindness	Diplopia (double vision)
		one eye	Other eye					
I/1 II/1 II/2 II/3 II/4	Masters, deck officers and ratings required to undertake look-out duties Aided: Unaided:	0.5# 0.1	0.5 0.1	Both eyes together Aided or unaided Vision required for ships' navigation (e.g. chart and nautical publication reference use of bridge instrumentation and equipment, and identification of aids to navigation)		Normal visual fields	Vision required to perform all necessary functions in darkness without compromise	No significant condition evident
I/1 III/1 III/2 III/3 III/4	All engineer officers and ratings forming part of an engine-room watch Aided: Unaided:	0.4 0.1	0.4 0.1	Vision required to read instruments in close proximity, to operate equipment, and to identify systems/components as necessary		Sufficient visual fields	Vision required to perform all necessary functions in darkness without compromise	No significant condition evident
I/1 IV/2	Radio officers and electrical/Electronic officers Aided: Unaided:	0.4 0.1	0.4 0.1	Vision required to read instruments in close proximity, to operate equipment, and to identify systems/components as necessary		Sufficient visual fields	Vision required to perform all necessary functions in darkness without compromise	No significant condition evident

*Note: Values given in Snellen decimal notation.

#Note: A value of at least 0.7 in one eye is recommended to reduce the risk of undetected underlying eye disease.

SCHEDULE IX
(Regulation 38(2))

PRESCRIBED FORMS

Form No. 1 - SEAFARERS MEDICAL FITNESS EXAMINATION REPORT

To be completed by the applicant

Surname:	First Name:	Male Female
Date /Place of Birth:	Rank/Grading:	
Present Occupation:	Company/Employer:	
Home /Contact Address: <i>(street/town/country include phone contact)</i>		

1. Family History

	yes	no
a) Has anyone in your close family or household been treated for tuberculosis (TB) in the past ten years?	<input type="checkbox"/>	<input type="checkbox"/>
b) Do you have a family history of heart disease, arthritis, rheumatism or diabetes?	<input type="checkbox"/>	<input type="checkbox"/>
c) Has anyone in your family ever been treated for mental illness or 'nervous' conditions?	<input type="checkbox"/>	<input type="checkbox"/>
<i>(For physicians use only)</i>		
<i>Please provide further information if the answer to any of the above questions is yes</i>		
.....		
.....		
.....		

2. Personal History

Have you ever suffered from:	yes	no
a) tuberculosis, spitting of blood or severe chest infection?	<input type="checkbox"/>	<input type="checkbox"/>
b) conditions of the heart or lungs, including breathlessness, palpitation and high blood pressure?	<input type="checkbox"/>	<input type="checkbox"/>
c) infection of the bladder, kidneys or urinary tract, including sexually transmitted infection?	<input type="checkbox"/>	<input type="checkbox"/>
d) any condition of the stomach, liver or bowels, including hepatitis or stomach ulcer?	<input type="checkbox"/>	<input type="checkbox"/>
e) convulsions, fits, epilepsy or severe migraine headaches?	<input type="checkbox"/>	<input type="checkbox"/>
f) skin complaints, including skin cancers which have required medical treatment?	<input type="checkbox"/>	<input type="checkbox"/>
g) malaria or leprosy - still suffer repetitive effects from it? - still taking medication?	<input type="checkbox"/>	<input type="checkbox"/>
h) diabetes, rheumatism, arthritis, hernia, stroke or cancer?	<input type="checkbox"/>	<input type="checkbox"/>
i) any major accidents or recent (in past ten years) surgical treatment?	<input type="checkbox"/>	<input type="checkbox"/>

3. General

	yes	no
a) Do you wear glasses or corrective (contact) lenses?	<input type="checkbox"/>	<input type="checkbox"/>
b) If yes, do you wear glasses for: <i>(circle one)</i>reading.....all the time		
c) When did you last have a chest X- ray <i>(year)</i>		
d) When did you last consult your doctor for an illness? <i>(month and year)</i>		

Examining Medical Practitioner's Report

1. Physical Examination

Candidate's general appearance: *(comment on visible signs of ill health and/ or disability)*

Height.....Weight.....

Blood Pressure.....Pulse rate.....

Urinalysis.....

a) Is there any evidence of heart and/or lung disease ?	yes	no
b) Is a chest X Ray required? <i>(consider history as well as examination results)</i>	<input type="checkbox"/>	<input type="checkbox"/>
c) Is there any evidence of past or recent ear, nose and/or throat infections	<input type="checkbox"/>	<input type="checkbox"/>
defect in sight or hearing? <i>(surgery tests essential)</i>	<input type="checkbox"/>	<input type="checkbox"/>
enlarged glands, varicose veins, skin lesions	<input type="checkbox"/>	<input type="checkbox"/>
disease of the uro-genital organs and tract	<input type="checkbox"/>	<input type="checkbox"/>
disease of the brain, spinal cord or nervous system	<input type="checkbox"/>	<input type="checkbox"/>
d) Does the applicant take any regular medication?	<input type="checkbox"/>	<input type="checkbox"/>

Name of medication and reason for taking?

.....

.....r comments.....

.....

2. Psychological Assessment

a) Does the applicant drink alcohol?	yes	no
b) In your opinion, is the applicant a mild, moderate or heavy drinker?	<input type="checkbox"/>	<input type="checkbox"/>
c) Does the patient have a history of, or is currently using drugs?	<input type="checkbox"/>	<input type="checkbox"/>
d) Is the applicant aware of the possible health risks associated with having unprotected sexual encounters whilst employed as a seafarer?	<input type="checkbox"/>	<input type="checkbox"/>
e) Is the applicant aware of the protective effects of condoms against possible health risks?	<input type="checkbox"/>	<input type="checkbox"/>
f) In your opinion, is the applicant a mature, responsible person who will manage employment as a seafarer?	<input type="checkbox"/>	<input type="checkbox"/>

Comments:.....

.....

.....

.....

Medical Practitioner's Recommendations

The examining doctor is requested to inform the candidate whether acceptance, deferment, or rejection is recommended. <i>(Delete where inapplicable)</i>	
Fit for contract service for..... years	Fit for permanent service
Fit for <ul style="list-style-type: none"> • International sea service in the capacity listed <u>OR</u> any other capacity..... • Home-trade service in the capacity listed 	
Deferred for..... months	Rejected

Results of Chest X Ray

.....

.....

.....

What further tests/investigations need to be undertaken for the candidate to be considered eligible?

.....

.....

.....

Other comments:.....

.....

.....

Signatures

Examining Practitioner..... Applicant:.....

Print Name:..... Print Name:.....

Date:..... Date:.....

Employment: Approved Not approved

Medical Practitioners Name:.....

Address:.....

Provider/Registration number:.....

Telephone #:..... Fax #:.....

Form No. 2 - SEAFARERS MEDICAL FITNESS CERTIFICATE

This is to certify that.....
has been examined in accordance with the *Physician's Guide to STCW-95*, published by the Secretariat of the Pacific Community, the International Convention on Standards of Training, Certification and Watchkeeping for Seafarers, 1978, as amended in 1995 and the MARINE (STCW CONVENTION) REGULATIONS 2000 and has been found fit for seagoing service in:

Management / Operational / Support level for.....years.
(Delete where inapplicable)

OR

Has been found unfit for seagoing service.

Other Comments:
.....
.....

Examining Practitioner's Name:.....
Address:.....
Medical Practitioner's Licence number:.....
Telephone #:..... Fax #:..... E-Mail:.....

Issued in:on..... Certificate No:.....
Examining Practitioner's signature..... (Stamp)

Form No. 3 - CERTIFICATE OF COMPETENCY



Fiji Marine Board

CERTIFICATE OF COMPETENCY

This is to certify that

has been found duly qualified to hold this
Certificate of Competency as

and is entitled under the Fiji Marine Act, 1986
to serve in a ship in any capacity requiring
the holding of a Certificate of that designation.

This Certificate of Competency is subject to
any endorsements as to its period of validity, limitations,
extensions or additional qualifications.

Certificate No.

(Official Seal)

President, Fiji Marine Board

Date of Issue

Form No. 4 - CERTIFICATE OF COMPETENCY (STCW ENDORSEMENT)

Republic of Fiji Islands



CERTIFICATE ISSUED UNDER THE PROVISIONS OF THE INTERNATIONAL CONVENTION ON STANDARDS OF TRAINING, CERTIFICATION AND WATCHKEEPING FOR SEAFARERS, 1978, AS AMENDED IN 1995

The Government of Fiji certifies that

has been found duly qualified in accordance with the provisions of Regulation(s) of the above Convention, as amended, and has been found competent to serve in the following capacity or capacities specified in the applicable Safe Manning requirements of the Administration subject to any limitations indicated, until :
unless otherwise cancelled, suspended, revalidated or until the date of expiry of any extension of the validity of this certificate as may be shown overleaf:

CAPACITY	LIMITATIONS APPLYING (IF ANY)

The lawful holder of this certificate may perform the following functions, at the levels indicated, subject to any limitations indicated:

FUNCTION	LEVEL	LIMITATIONS (IF ANY)
1 2 3 4 5 6 7		
1 2 3 4 5 6 7		
1 2 3 4 5 6 7		
1 2 3 4 5 6 7		

Certificate No:

Issued in Suva on:

(Official Seal)

President, Fiji Marine Board
Name:

Signature of the holder

ENDORSEMENTS

--

REVALIDATION

The validity of this certificate is hereby extended until	
<i>(Official Seal)</i>	
	President, Fiji Marine Board
Date of revalidation.	<i>Name of duly authorised official</i>
The validity of this certificate is hereby extended until	
<i>(Official Seal)</i>	
	President, Fiji Marine Board
Date of revalidation.	<i>Name of duly authorised official</i>

FUNCTIONS

(as specified on STCW 95 Certificates)

- | | |
|---|---------------------------------------------------------------------|
| 1 | Navigation |
| 2 | Cargo Handling and Stowage |
| 3 | Controlling the Operation of the Ship and care for Persons on Board |
| 4 | Marine Engineering |
| 5 | Electrical, Electronic and Control Engineering |
| 6 | Maintenance and Repair |
| 7 | Radiocommunications |

DETAIL OF HOLDER OF CERTIFICATE

<p>Name of Holder :</p> <p>Date & Place of Examination :</p> <p>Date & Place of Birth :</p> <p>Height (cm) :</p> <p>Other Identifying Features:</p>	<p>Photograph of the holder of the certificate</p>
-------------------------------------------------------------------------------------------------------------------------------------------------------------	------------------------------------------------------------

Form No. 5 – APPLICATION FOR CERTIFICATE OF COMPETENCY OR RECOGNITION

Please tick ✓ appropriate box (Please use BLOCK LETTERS)

Service Required			
Certificate of Competency	Endorsement of a Marine Certificate	Replacement Certificate	
Certificate of Recognition	Renewal of a Marine Certificate	Seafarer Assessment	

Class of Certificate for which this application applies	Seafarer Registration No. (if known)	
---------------------------------------------------------	--------------------------------------	--

Applicant's Details

Family Name	Given name/s	
-------------	--------------	--

Postal Address	
----------------	--

Residential Address (if the same postal address write 'as above')	
-------------------------------------------------------------------	--

Telephone	Date of Birth	Place of Birth (Country)	
-----------	---------------	--------------------------	--

Height (cm)	Colour of Eyes	Colour of Hair	Gender	Male / Female
-------------	----------------	----------------	--------	---------------

Particulars of Marine Certificates held

No.	Class	Issuing Authority	Date of Issue	Date of Expiry	Endorsements	Ever Suspended or Cancelled (State why)

Service Record Book Details

Date Issued	Place Issued	Book No.	
-------------	--------------	----------	--

Details of Eyesight Test (Original Certificate to be sighted)

Date Issued	Place Tested	Results	Certificate No.
-------------	--------------	---------	-----------------

Certificate of Medical Fitness (Original Certificate to be sighted)

Date Issued	Doctor	Telephone
-------------	--------	-----------

Applicant's Declaration

I (name in BLOCK LETTERS), hereby declare that the particulars entered in this application are correct and true to the best of my knowledge and belief, and that the Certificates and Testimonials submitted with this application for verification of particular entries are true and genuine documents given and signed by the persons whose names appear on them. I understand that some or all of the information provided on this form may be disclosed to Government Authorities.

Applicant's Signature	Taken and declared before me at
	This day of 20.....

Signature (Justice of the Peace/Commissioner of Oaths)	Name (please print)
--------------------------------------------------------	---------------------

Declaration of Sea Service (must be supported Statutory Declaration/Service Record Book)

Details of Ship			Operation			Service on Board			Remarks
Name & Number	Gross Tons	No & Power of Eng (kW)	Area	Type	Duties	Start (Date & Place)	Finish (Date & Place)	No of Days at sea	

If there is insufficient space, please attach another form.

Abbreviations

Area of Operation	Type	Principal Duties	Official Use Only
UL-Unlimited	C-Commercial Vessel	M- Master	Total Service: _____
NC-Near Coastal	FV-Fishing Vessel	CM-Chief Mate	Commercial: _____
TW-Territorial Waters	RP-Recreational	2M- Second Mate	Last 5 years: _____
IS- Inshore	N-Naval	3M- Third Mate	>3000GT / kW _____
SW-Sheltered Waters	R-Rescue	WKD-Watchkeeper Deck	<3000GT/ kW _____
PA-Pilotage Areas	T-Tankers	DR- Deck Rating	<1600GT / 1500 kW _____
	PC - Pass/Cargo	IR- Integrated Rating	<500GT / 750 kW _____
	P- Passenger	CE- Chief Engineer	<80GT / 500 kW _____
	RR -RO-RO	2E- Second Engineer	<20GT / 250 kW _____
	HS -High Speed Craft	3E- Third Engineer	Seatime Approved: Y / N
	CS - Cable	WKE-Watchkeeper Engineer	Certificate: _____
	NA- Navais	ER- Watch Rating Engine	Sign: _____
	O-Others	P- Pilot	Date/Stamp: _____
		O- Others (Please specify) -	

Statement of Service Ashore (ENGINEERS)

No. of Testimonials	Name & Address of Firm & Workshop	Nature of Business	Nature of work done by applicant	From	To	No of Days	Remarks

Course Details (including approved Training Institutions and associated specialist courses)

Course Title	Training Institution	Date of Issue

Form No. 6 - CERTIFICATE OF APPROVAL TO CONDUCT TRAINING



Ministry of Tourism & Transport

Certificate Number:

CERTIFICATE OF APPROVAL
TO
CONDUCT TRAINING

I hereby certify that

(insert name and address of certificate holder)

approved to conduct training programmes leading to the issue of Fiji maritime
qualifications in accordance with the Marine (STCW Convention) Regulations 2001 Part VI.

Dated this day of 20

(signed)

(Official seal)

Minister for Tourism & Transport

(This certificate is subject to the conditions and limitations attached.)

CERTIFICATE OF APPROVAL

Attachment 1

Certificate Number:

The Certificate of Approval to which this attachment applies is issued subject to certain conditions. These conditions are that:

1. All requirements for issue of this certificate are maintained.
2. Audits. Carried out by the Fiji Marine Board auditors in accordance with Part IX of the Marine (STCW Convention) Regulations 2001, shall be permitted by the holder of this Certificate.
3. The holder of this certificate will notify the Fiji Marine Board of any changes to the system of the Quality control, training programmes or any event that may effect the quality of the programme. These events may include:
 - Reduction of staff numbers or qualifications allocated to a programme;
 - Reduction of teaching contact or course hours for any module;
 - Loss of use of any equipment or facilities critical to the programme.
4. *(insert other conditions as required)*

The certificates are granted subject to the following limitations.

1. This certificate is valid for five (5) years from the date of issue.
2. This certificate is valid for the following programmes.

Programmes	Approval dates	
	From	To

(insert the list of approved programmes and the date to which each is approved)

3. *(insert other limitations as required)*

(Signed)
Minister for Tourism and Transport

Date:

Made at Suva this 20th day of February 2001.


K. YABAKI.
Minister for Tourism & Transport